

St Patricks Channel — Overview

CHS Chart No: 4278 – Great Bras d'Or and St Patricks Channel

Amenities: See charts for Baddeck Harbour, Little Narrows, and Whycomomagh

Description:

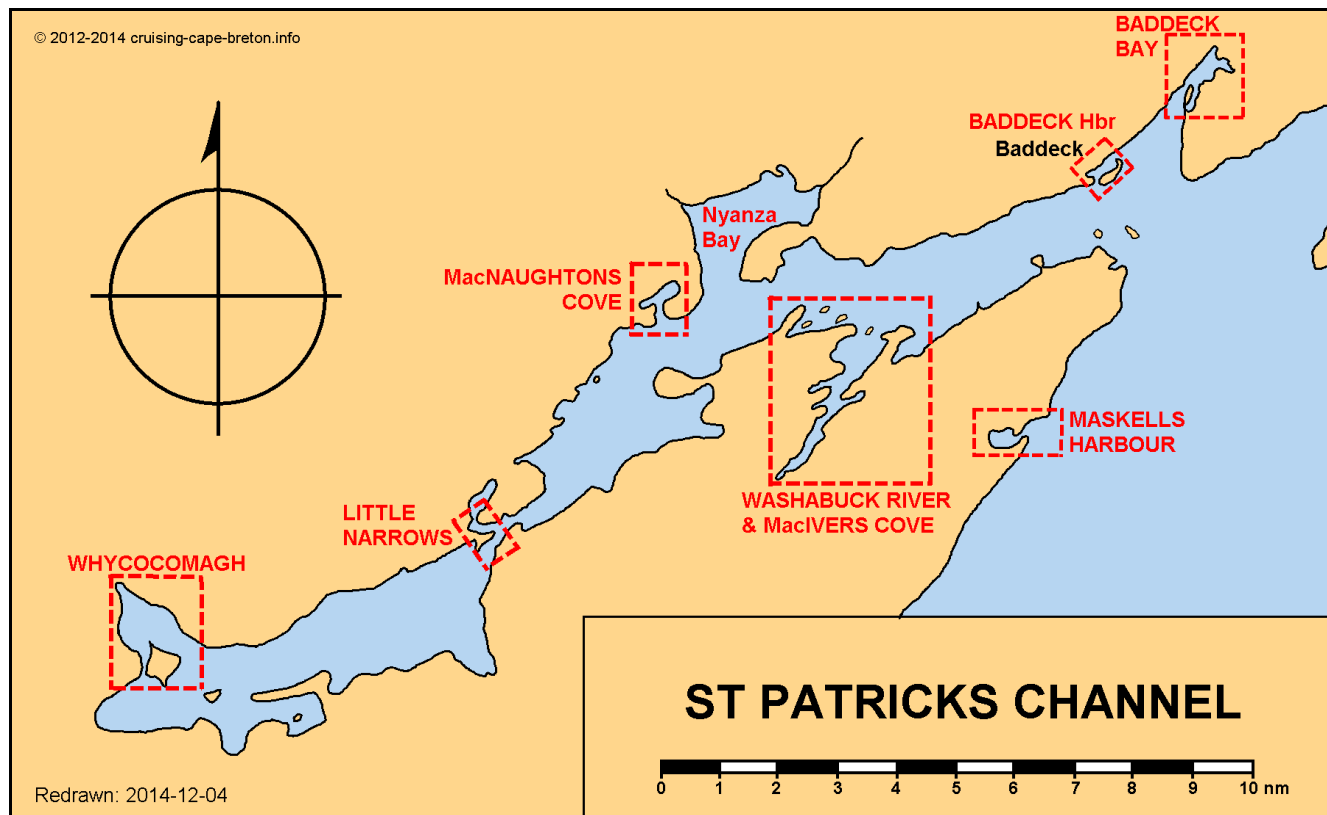
Although Maskells Harbour, Baddeck Bay, and Baddeck Harbour are not strictly on St Patricks Channel, for convenience they are included with this area.

The area from Red Head to Whycomomagh has numerous coves to attract the cruiser, though not all provide complete all-round protection. Favourites are Washabuck River with its several snug coves in which one might ride out a hurricane, and Maskells Harbour. The smaller coves such as MacNaughtons and Little Narrows provide good protection and seclusion.

Nyanza Bay has little to offer the cruiser: it is wide open and relatively shallow. The dock at the head of the bay near the 'Herring Choker' is a crumbling concrete-and-steel structure (2012) with a high deck and is best suited to steel barges. Dinghying ashore is difficult. A small bulkheaded docking area near the entrance on the western shore belongs to the Wagmatcook Aboriginal Fisheries and has little or no facilities for cruisers, but could be used in an emergency for access to the shore.

Navigation:

As the channel is used by ocean-going ships, it is well marked as far as Little Narrows. From buoy **A11**, off MacIvers Point, the deeper water is marked by a series of ranges as well as buoys to guide ships to the gypsum loading dock. While these ranges may be of little interest to cruisers, it should be noted that after dredging of the Great Bras d'Or Entrance to allow deeper draught vessels to enter the lakes, a couple of additional ranges were added to guide ships around the south side of MacIvers Shoal. If these ranges are not shown on your chart, this may cause confusion.



Updated: 2014-12-04