

# Great Bras d'Or Channel — Overview

**CHS Chart No:** 4277 — Great Bras d'Or, St Andrews Channel & St Anns Bay

## **Amenities:**

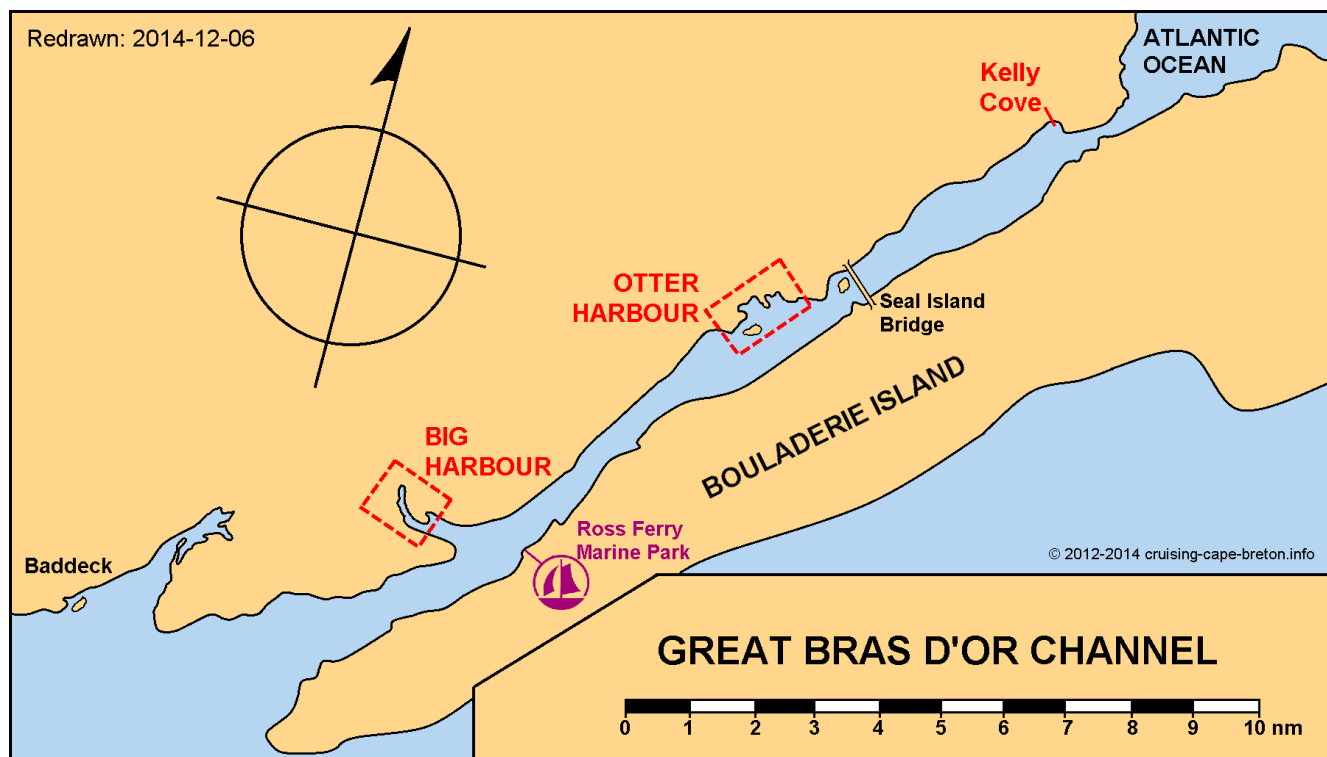
Ross Ferry Marine Park (902 674-0148): pump-out, washroom, shower.

## **Description:**

The Great Bras d'Or Channel is the main sea entrance into the Lakes, stretching 17 miles from Noir Point to Kempt Head. The anchorages at Big Harbour and Otter Harbour are excellent staging points for a passage through the channel, especially if making an early morning exit or a late afternoon entry. The fishing wharves at Kelly Cove and Big Bras d'Or are also convenient, but should be avoided in lobster season. The anchorage at Seal Island has not been included at this time; it is deep and conditions there are unknown, and the aforementioned anchorages are to be preferred. The Ross Ferry Marine Park, almost directly opposite Big Harbour has some dockage space, and is an excellent place to get ashore and stretch your legs.

## **Navigation:**

The clearance under the Seal Island Bridge is 118' (36 m). Small craft should exercise caution in navigating this channel, as tidal currents can exceed 6 knots in the narrows between Noir Point and Carey Point, and wind against current can create a brutal chop. The current may be less under the Seal Island bridge, nevertheless, eddying can be severe in this area, especially on the south side of the bridge. The two narrows are best navigated near slack water, which occurs about three hours after high or low tide. The current tables for the Great Bras d'Or Narrows should be consulted. The seaward approach to the narrows was dredged to allow deeper draught gypsum ships into the Lakes. At the same time the channel was straightened, so that a single range from Noir Point, and a sector light on Black Rock Point now provide guidance.



Updated: 2014-12-06