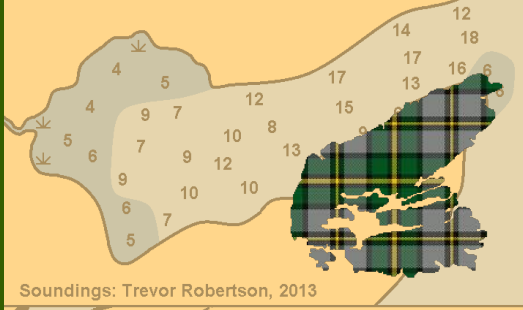


Deep Cove



Soundings: Trevor Robertson, 2013

ST PATRICKS CHANNEL

Cruising Cape Breton

The Cruisers' Guide to

Cape Breton Island and the Bras d'Or Lakes

Section III — St Anns Harbour

Deep Cove
(See Inset)

Campbells
Cove

Updated: 2017-12-08

Washabuck & MacIvers Cove



© 2012-2017 cruising-cape-cape-breton.info

NOT FOR NAVIGATION - For guidance only

Redrawn: 2013-11-08



Contents & Disclaimer

St Anns Harbour

St Anns Harbour – Overview	1
Jersey Cove & St Anns Harbour Entrance	3
Goose Cove & North River	4
Seal Cove	5
North Gut & South Gut	7

Caution: These chartlets are NO substitute for CHS charts. They are intended to provide supplementary information and detail, unavailable in the large-scale CHS chart 4277.

Disclaimer: The authors have made every effort to verify the accuracy of the information contained in these chartlets but assume no responsibility for errors, omissions or contradictory information contained therein. The authors are not liable or responsible for any losses or damages, which include, but are not limited to: loss of personal assets (tangible or intangible), time, materials, service, profits, business, clients, or other pecuniary loss due to use of this information.

This information is provided for guidance purposes only.

As a cruiser, you assume full and complete responsibility for the use of this information and for the safe and prudent operation of your vessel.

St Anns Harbour — Overview

CHS Chart No: 4277 – Great Bras d'Or, St Andrews Channel & St Anns Bay

Amenities:

Few other than the beauty and solitude of the surroundings.

Description:

St Anns Harbour is a beautiful body of water girded by high hills, and is completely protected from the ocean by a shingle bar extending from the western shore. However, due to the significant fetches an uncomfortable chop can build in fresh winds. It is an ideal spot for a short trip of a few days out of Sydney, without having to tackle the Great Bras d'Or Entrance to reach the Lakes, or for an en-route stopover. There are several anchorages for small craft, and if complete protection is required in shifting winds, such as in the passage of a frontal system, the North Gut is as snug an anchorage as one might wish for. Few cruisers venture to St Anns Harbour, and one is most likely to have an anchorage to oneself. The harbour is subject to strong afternoon sea breezes, funneling between Cape Dauphin and Kellys Mountain on east and St Anns Mountain on the west. The breeze may exceed 20 knots and persist well into the evening before dying away.

Navigation:

Cruisers are cautioned that extensive mussel farming areas exist in the harbour and that navigation is somewhat restricted. The entrance to St Anns Harbour is well buoyed (See Jersey Cove & St Anns Harbour Entrance) and has ample depth for pleasure craft. At the Englishtown ferry crossing the entrance is only one-tenth of a mile wide, and the water is deep. The flood and ebb currents can run as high as four knots. The tidal range in the harbour is little different than on the ocean side and is about 4.4 feet on a large tide. As a result, slack water in the entrance occurs shortly after high or low water.

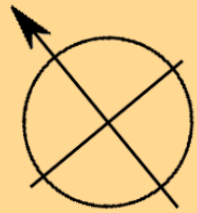
The ferry shows red/green lights from both shores but they can be difficult to distinguish against the light of the sky. The lights show red when the ferry is in transit, and green when docked and it is safe to pass. The ferry crew are normally attentive, and are patient with boats struggling against a foul current.

Once past the Port Shoal light buoy, **KP8**, the turn may be made into Jersey Cove. If proceeding toward Seal Cove or Goose Cove, maintain a course toward Munro Point to keep clear of the mussel farms. A slight alteration of course toward the north as one approaches Munro Point may be necessary to avoid the north end of the westernmost mussel farm area.

CAUTION: Soundings on the anchorage charts have been taken from current and discontinued CHS charts. Soundings may be less in shallow areas of Goose Cove and North River, and South Gut. Recent observations for Seal Cove and North Gut indicate no significant differences.

Revised: 2016-08-14

Corrected: 2016-08-05



CAUTION: Aquaculture locations are approximate

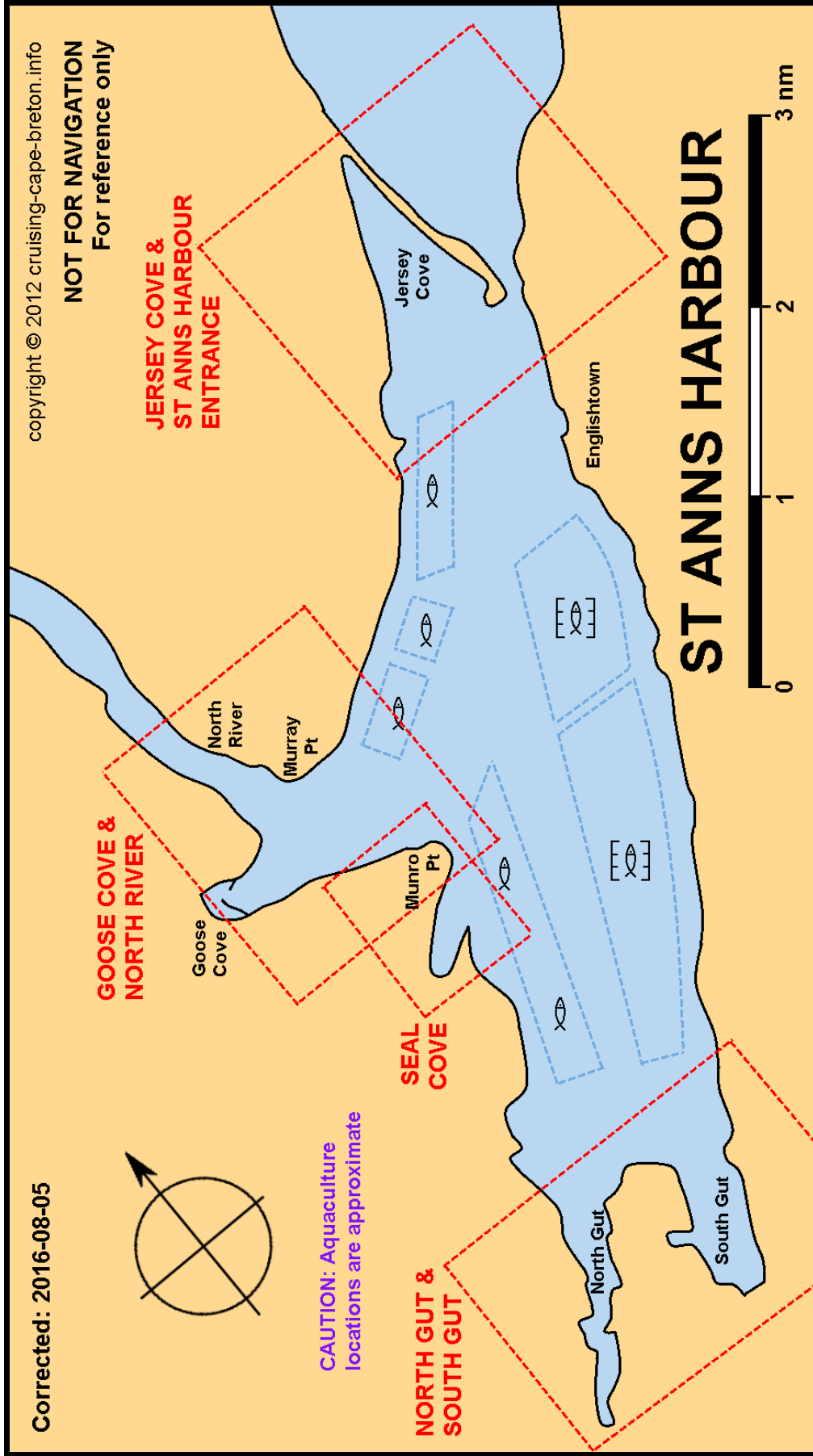
copyright © 2012 cruising-cape-breton.info
NOT FOR NAVIGATION
For reference only

GOOSE COVE & NORTH RIVER

JERSEY COVE & ST ANNS HARBOUR ENTRANCE

SEAL COVE

NORTH GUT & SOUTH GUT



ST ANNS HARBOUR



Jersey Cove

CHS Chart No: 4277 – Great Bras d'Or, St Andrews Channel & St Anns Bay

Amenities:

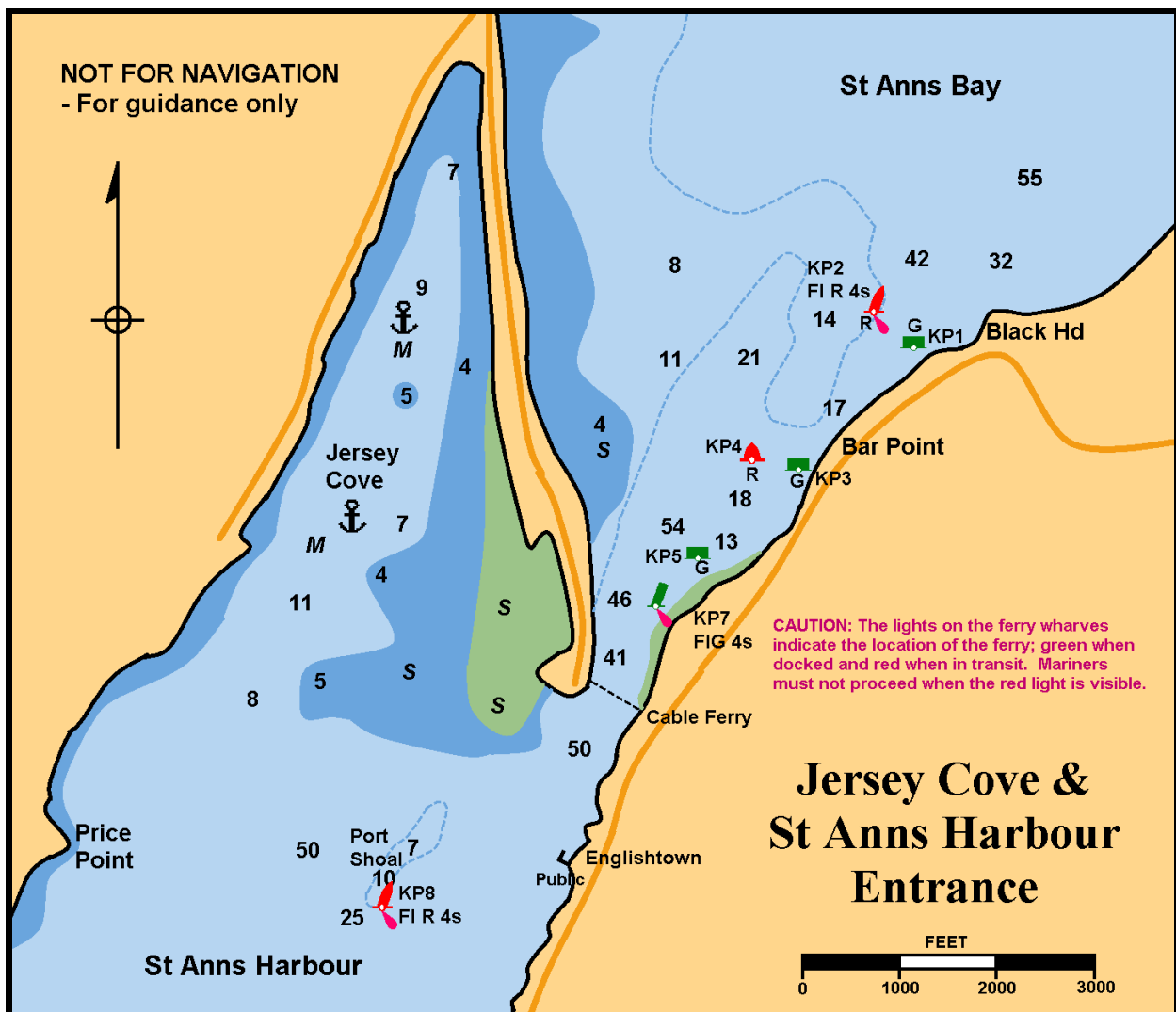
None known

Description:

Jersey Cove provides a good anchorage in settled weather, but will be uncomfortable for small craft in a fresh southerly wind and the sea breaks heavily on the bar in strong NE'ly winds. A better anchorage is to be found in Goose Cove.

Navigation:

See *St Anns Harbour - Overview* for details of the entrance. Pass south of the Port Shoal buoy KP8 and proceed north-westward toward the shore to avoid the shallows extending west of the bar. The deeper water can be found close to the western shore of the cove. Anchor in 8 - 10 feet in mud.



Goose Cove & North River

CHS Chart No: 4277 – Great Bras d'Or, St Andrews Channel & St Anns Bay

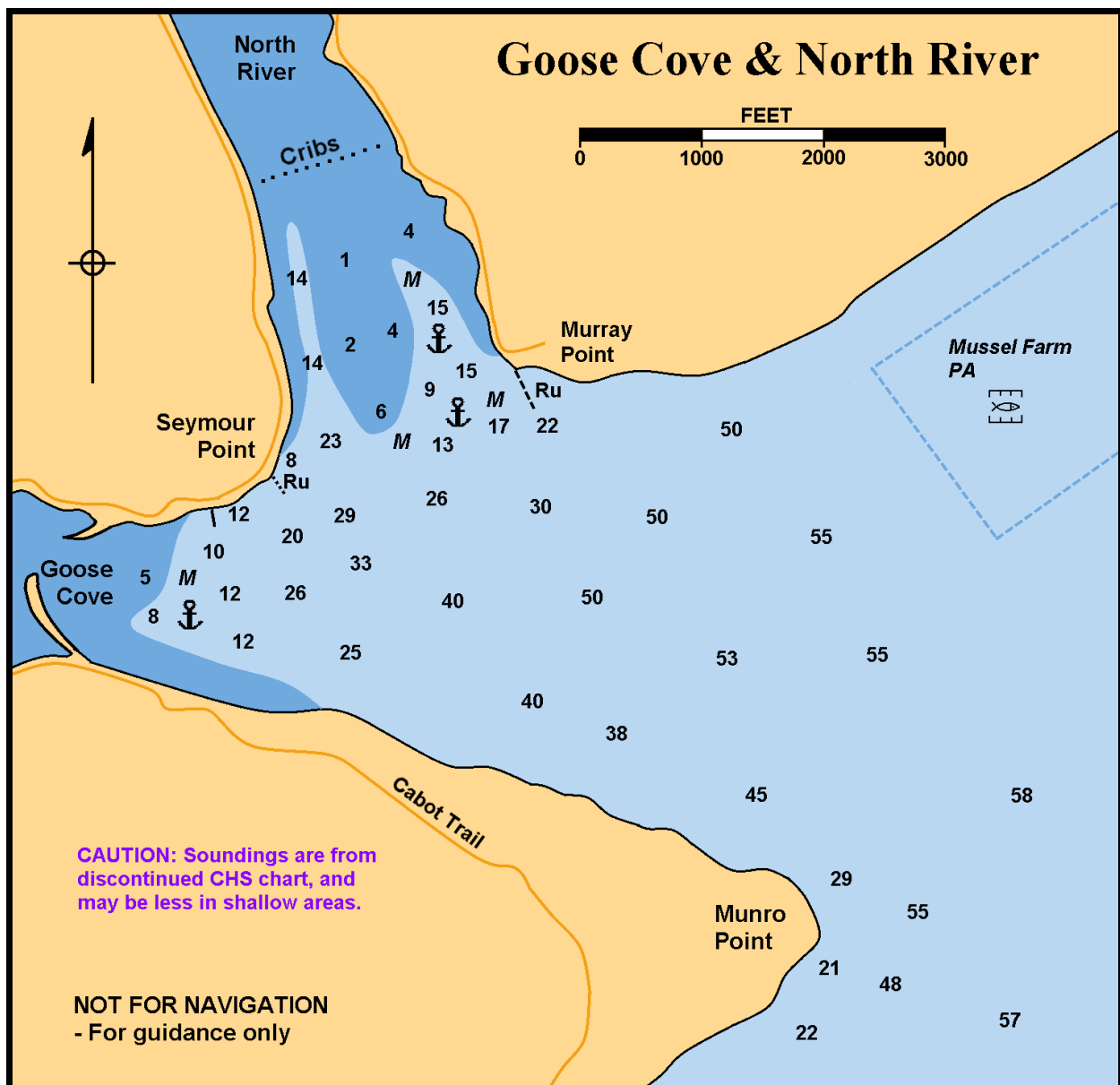
Amenities:

None known

Description:

Navigation:

From the entrance, after passing the Port Shoal light buoy KP8, head for Munro Point until past the mussel farms on the starboard side, then head in to the North River and anchor to the west of the ruins of the old wharf, or enter deep into Goose Cove. There is good holding in mud. Exposed to E'ly winds.



Seal Cove (St Anns Harbour)

CHS Chart No: 4277 – Great Bras d'Or, St Andrews Channel & St Anns Bay

Amenities:

None

Description:

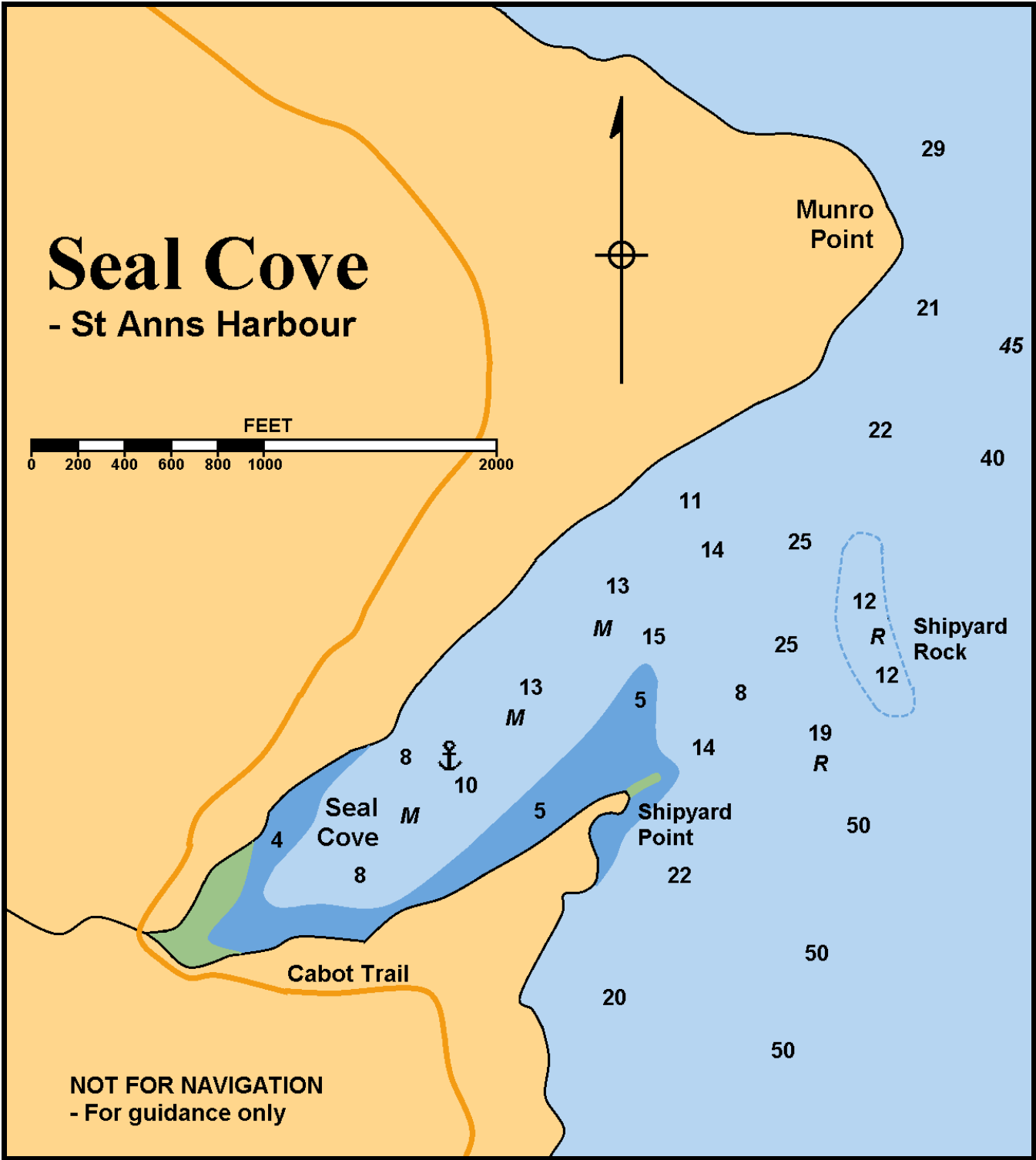
A delightful secluded cove. The Cabot Trail runs past the end of the cove, but is distant enough from the anchoring area, so that there is little disturbance. On a fine summer day, dozens of motorists and bikers will stop to take a picture of your boat in this picturesque cove with Kellys Mountain in the distance. Mussels can be taken along the shoreline, but care should be taken eating them as they tend to have numerous small pearls.

Eagles, ospreys, and herons abound here and provide the entertainment throughout the day but especially in the late afternoon. Exposed to NE winds.



Navigation:

From the entrance, after passing the Port Shoal light buoy KP8, head for Munro Point keeping clear of the northern end of the westernmost mussel farm and turn southward to enter Seal Cove. Depth shoals gradually toward the end of the cove. Anchor in 10+ feet in soft mud. Good holding, but avoid weedy areas.



North and South Guts

CHS Chart No: 4277 – Great Bras d'Or, St Andrews Channel & St Anns Bay

Amenities:

A restaurant, the Lobster Galley (902-295-3100) is situated at the southern end of South Gut.

Description:

North Gut and South Gut may be more aptly named West Gut and East Gut, but the names are what they are. North Gut provides the best all-round protection in St Anns Harbour. Although open to the north, the wind and chop do not penetrate the cove. A cruising boat can ride out a northerly gale tucked in behind the sand-spit extending from the eastern shore of the gut opposite Ross Cove.

South Gut is wide and wide open to the north but a narrow winding channel carrying about 5 feet leads into a small protected anchorage in Black Cove. South Gut is close to the busy Trans-Canada Highway, but close to the Lobster Galley restaurant. The restaurant provides no docking facilities but access to the shore can be made on the causeway crossing the gut. The 'public wharf' on the eastern side of the gut is little more than a rock pile at present, and landing there may be difficult.

Navigation:

From the entrance to St Anns Harbour, after passing the Port Shoal lighted buoy KP8, one can either proceed as for Seal Cove and pass along the western side of the westernmost mussel farm, or proceed down the centre of the bay between the mussel farms. Entrance into South Gut is straightforward, and one can anchor just south of the ruined wharf.

The entry into North gut is narrower and shoals extend from either shore, so caution is required for deep draft vessels. Anchor off Ross Cove or a little deeper in the gut, and for best protection in behind the sand-spit in 10 feet. The water on the south side of the spit carries 6 feet close to the spit

Revised: 2017-12-08

