

Whycocomagh

CHS Chart No: 4278 – Great Bras d'Or & St Patricks Channel

Amenities:

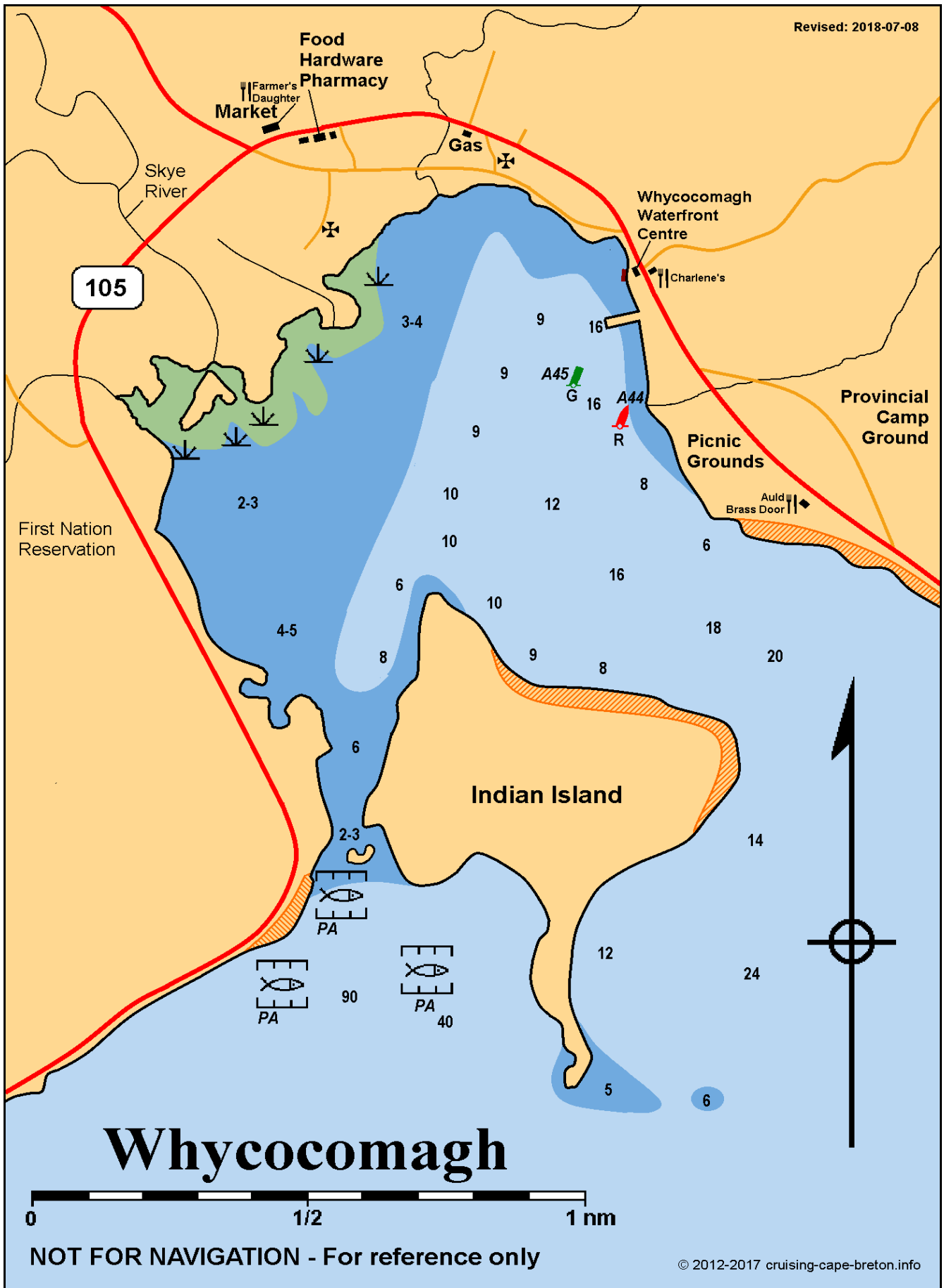
Whycocomagh Waterfront Centre (dockage, pump-out, water, toilets)
Food (Co-op), Fuel by jug, Hardware (Home Hardware), Pharmacy, Restaurants (Charlene's, Farmer's Daughter, Auld Brass Door), NSLC outlet (Co-op)

Description:

Whycocomagh, pronounced "why-COG-a-muh", has many amenities, though at some distance from the public dock. The Esso station is about 1 km from the dock. The Co-op food store, Hardware, Pharmacy, and Farmer's Daughter Country Market are about 1.4 km (0.9 miles) from the dock. The Whycocomagh Waterfront Centre, formerly the Royal Canadian Legion building, is a little closer to the amenities and has dockage for boats with less than 6 feet of draught. Charlene's Bayside Restaurant and Café is conveniently located just across the road from the Waterfront Centre. The Farmer's Daughter restaurant is in the Country Market. The Auld Brass Door bar and restaurant is located to the SE of the public dock; a walk of about 800 metres (½ mile). The area on the west side of the bay, SW of the Skye River, is a First Nation reservation

Updated: 2017-07-29

We'koqma'q



Whycocomagh

0 1/2 1 nm

NOT FOR NAVIGATION - For reference only