

# Washabuck River & Maclvers Cove

**CHS Chart No:** 4278 – Great Bras d'Or & St Patricks Channel

**Amenities:**

None known

**Description:**

Maclvers Cove provides a good anchorage.

Washabuck River has a number of quiet, sheltered coves, and is possibly the best hurricane hole between Newfoundland and the Caribbean, Deep Cove being particularly safe.

The heavy equipment sounds you can hear, when at anchor here, come from the gypsum mine just a couple of miles to the SW.

The water in the Washabuck River is only slightly brackish, and provides excellent swimming.

**Navigation:**

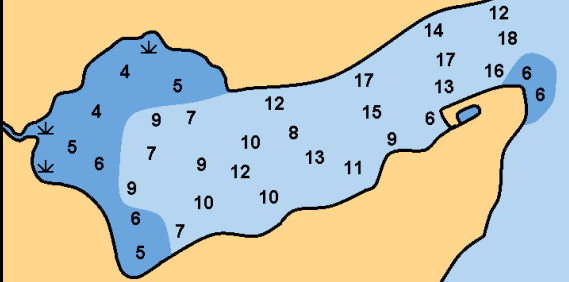
Approach should be made from the green buoy, **A7**, off Murphy Point.

If entering **Maclvers Cove**, favour the port-hand shore as a rocky shoal extends well across the entrance from Murphy Point.

The buoys at the **Washabuck River** entrance mark a deep, narrow channel with a rock pinnacle on the starboard side and a razor-sharp reef on the other. Once inside the river is wide and deep. A little past the last red buoy, AC12, the water deepens to 120 feet, which precludes anchoring in that area.

Updated: 2013-11-08

# Deep Cove



Soundings: Trevor Robertson, 2013

# ST PATRICKS CHANNEL

Chart 4278

A7  
G

Birch Pt

Murphy Pt

Plaster Pt

Washabuck River

MacIvers Cove

Cranberry Pt

Indian Cove

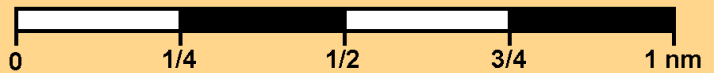
Jeannies Pt

Deep Cove  
(See Inset)

MacDonalds Cove

Campbells Cove

# Washabuck River & MacIvers Cove



NOT FOR NAVIGATION - For guidance only

Redrawn: 2013-11-08