

Entrance to North & Denys Basins

CHS Chart No: 4279 – Bras d'Or Lake

Amenities: none

Description:

From McKinnons Harbour, the westward route into Orangedale and River Denys winds around islands and headlands with coves and anchorages on all sides. Deepest water is normally in mid-channel and sandbars protruding from the islands are fairly bold.

The small cove opposite Round Island carries 12 feet of water well in past the headlands.

Due to restricted swinging room, it is really only suitable for one boat, but is a great secluded spot for a quiet evening on board.

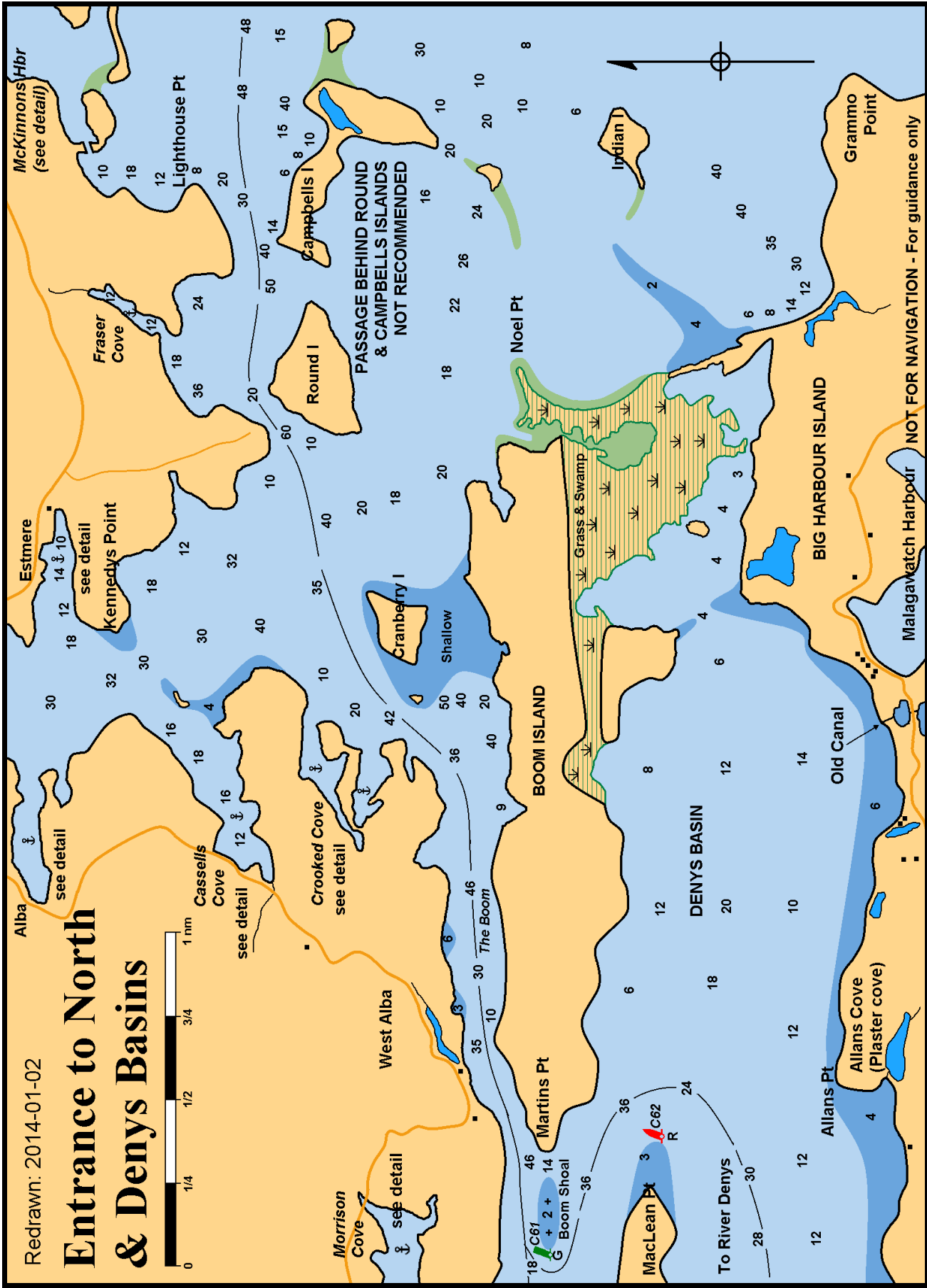
At Round Island, the channel opens presenting a number of alternatives. If proceeding through The Boom into the inner basins, the course is around Cranberry Island into The Boom. From Bound Island, the head lands of Crooked Cove appear to be 'islands' and may be confused with Cranberry Island. Bear southwest to enter The Boom, which derives its name from the days when cut timber was contained in floating booms of logs at either end of the passage on the north side of Boom Island.

The various coves and anchorages are described in individual charts.

Revised: 2014-01-03

Redrawn: 2014-01-02

Entrance to North & Denys Basins



NOT FOR NAVIGATION - For guidance only