

# St Andrews Channel — Overview

**CHS Chart No:** 4267 — Little Bras d'Or  
4277 — Great Bras d'Or, St Andrews Channel & St Anns Bay

## Amenities:

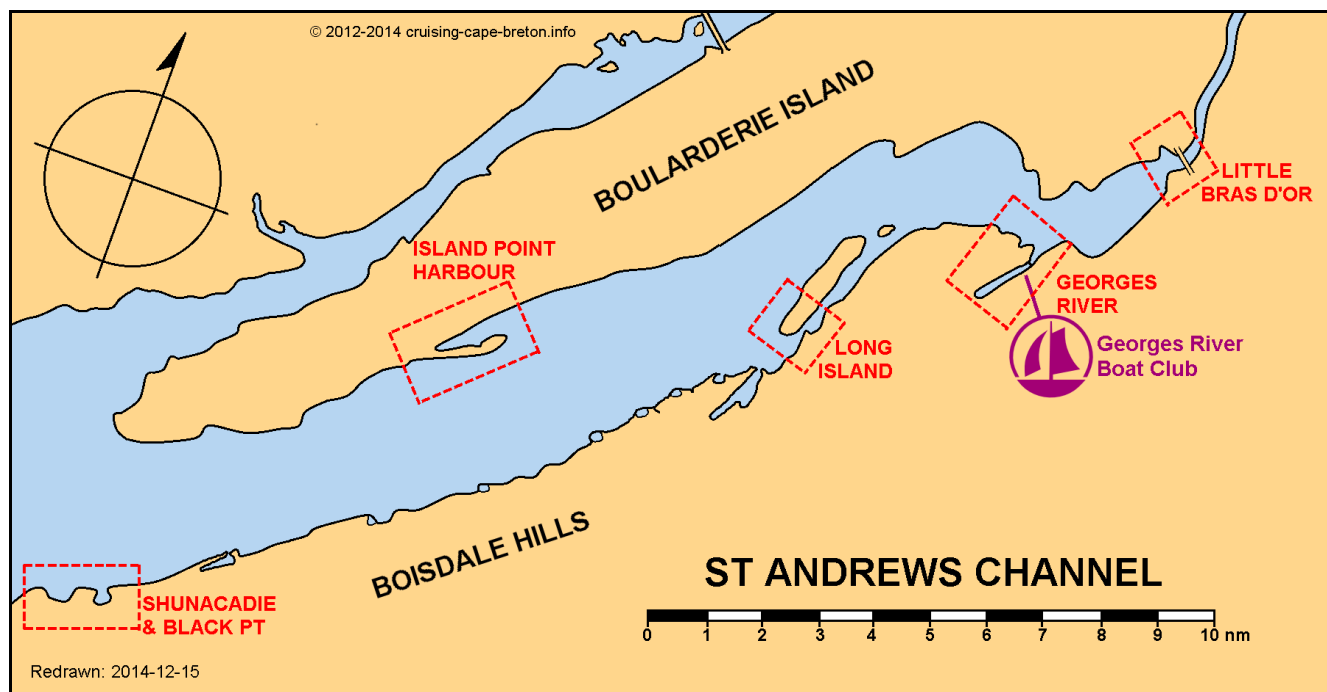
## Description:

The St Andrews Channel arm of the Bras d'Or Lakes contains approximately 40 square miles of open deep water. The deepest sounding in the Lakes system of over 1700 feet (526 m) is to be found in the centre of the channel between Long Island and Boularderie Island.

The northern shore is characterized by almost continuous sheer bluffs of gypsum and sandstone, ranging in height from 10 to 75 feet, and is sparsely populated.

The southern shore slopes gently to the water and exudes a number of 'barachois', sandbars growing from the shorelines that eventually encapsulate a small body of water and create a point of land. There are numerous homes and cottages along this shore.

During prolonged strong winds from either the north or south, waves can build up to 3 to 4 feet. Winds normally subside on the Lakes at dusk.



Updated: 2014-12-05