

# Ingonish Harbour

**CHS Chart No:** 4365 – Ingonish and Dingwall Harbours  
4367 – Flint Island to Cape Smoky  
4363 – Cape Smoky to St Paul Island

## **Amenities:**

Ingonish Landing Marina; Knotty Pine Variety Store (Ingonish Ferry, 902-285-2058); Main Street Restaurant & Bakery (902-285-2225); Doucette's RiteSTOP Convenience (902-285-2861); Scotiabank (902 285-2555); Doucette's "Caper Gas" Service Station (902-285-2029) - gas, diesel, ice, propane filling; HomeHardware Store; beaches; Cape Breton Highlands National Park.

## **Description:**

Ingonish Harbour provides good all round protection in a beautiful setting.

With depths of 50 to 60 feet, much of the harbour is a little deep for anchoring. Some cruisers anchor close to the sandbars just inside the entrance, but find themselves scrambling to weigh anchor in the teeth of strong katabatic winds, which can arrive with little warning, threatening to drive them onto the sandbar. The most protected anchorage is in what is locally known as Dunphys Creek to the north of the entrance. There is just enough room for a couple of boats to raft up here, but it is a good place to ride out bad weather. The other preferred anchorage is at the head of the bay, where there is good holding in 15 to 20 feet, or close to the Ingonish Landing Marina in the protection of the point of land that juts out there. Depending on the weather, one may have to move anchor to get the best protection. A small floating dock at the fishing wharf at Ingonish Ferry can accommodate a couple of visiting boats.

The Ingonish Landing Marina continues to undergo development under the auspices of the Ingonish Development Society. A small building has been erected and power restored to the site. Moorings have been established in an area off the face of the wharf, and a floating dock (dinghy dock) installed. Other infrastructure improvements are under way.

Most amenities are located in Ingonish Beach. **Ingo Cab** (902-285-4523) provides taxi service between the Marina and Ingonish Beach, 2 pm – 1 am, with morning fares by appointment. Or dinghy to the launch ramp on the east side of the entrance to Dunphys Creek, or, on a suitable tide, to the head of Dunphys Creek and climb the embankment to the road, from where it is only 1 km (0.6 mi) to the village.

## **Navigation:**

Tidal range on a 'Large tide' is about 4.4 feet. Use tidal predictions for North Sydney (Add ~10 minutes and ~0.4 ft)

From the South Bay Ingonish light buoy **KM** (4638.04/6022.81), located one-third of a mile off the entrance, follow the buoyed channel. The entrance is very narrow, and the shoal on the north side tends to encroach on the channel. The deepest water at the entrance is close to the south sand bar, so favour the green buoys. Although about 16 feet deep, cruisers should avoid entering in strong easterly winds. Once through the sandbars the water deepens quickly.

A couple of sandbars guard the entrance to Dunphys Creek. Proceed close to the west shore until just past the old fish landing dock, then turn sharply east until close to the east shoreline, then stay close to the shore until past the large T-dock. The sandbars are usually staked by local boaters, but the colours of the attached ribbons may not follow IALA standards! A good lookout on the foredeck is essential.

Revised: 2017-12-07

See detailed chart  
for  
Dunphys Creek



Chart 4365

CAUTION: Due to silting  
buoys may be repositioned  
to mark the channel

Chart 4365

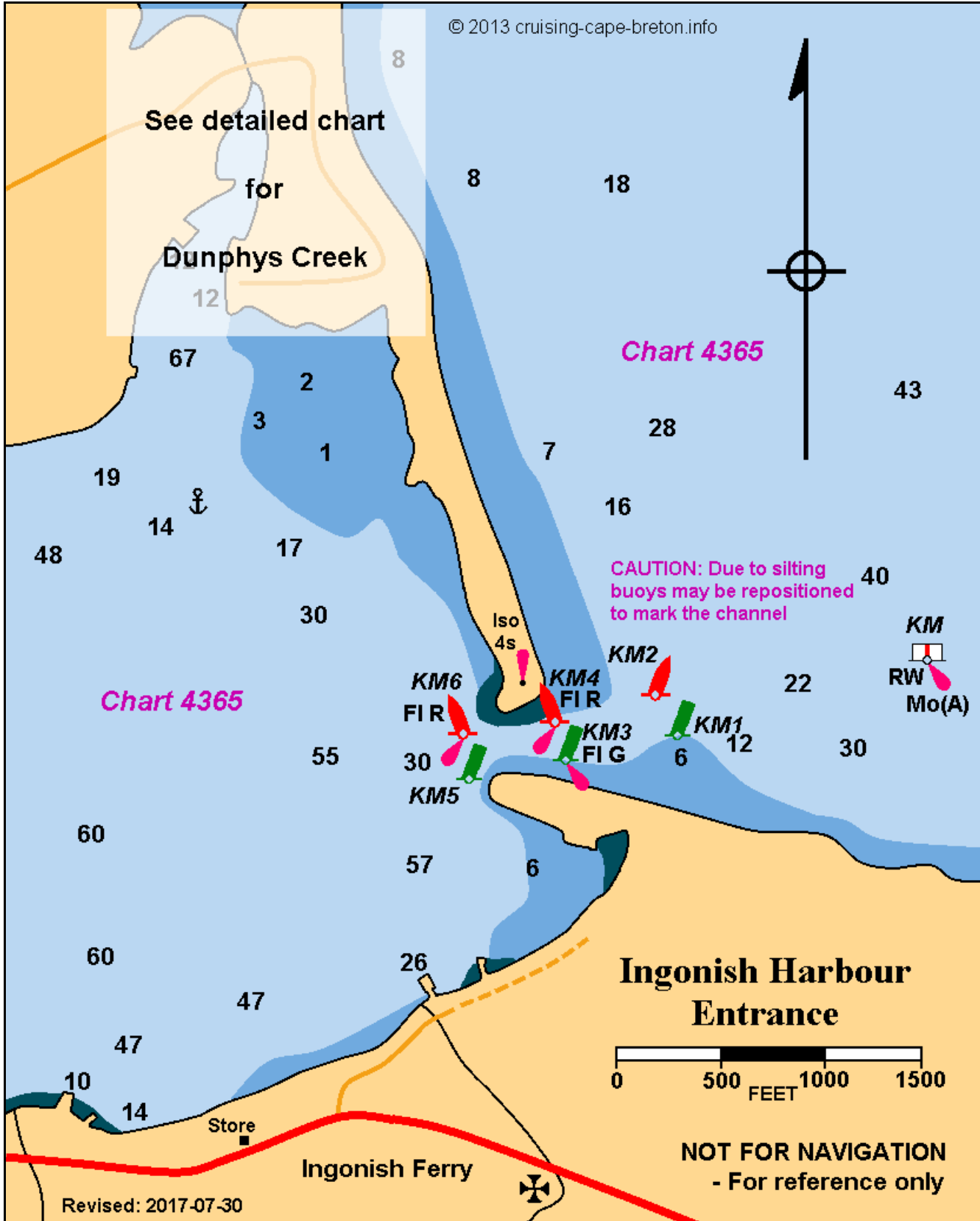
KM  
RW  
Mo(A)

### Ingonish Harbour Entrance



NOT FOR NAVIGATION  
- For reference only

Revised: 2017-07-30



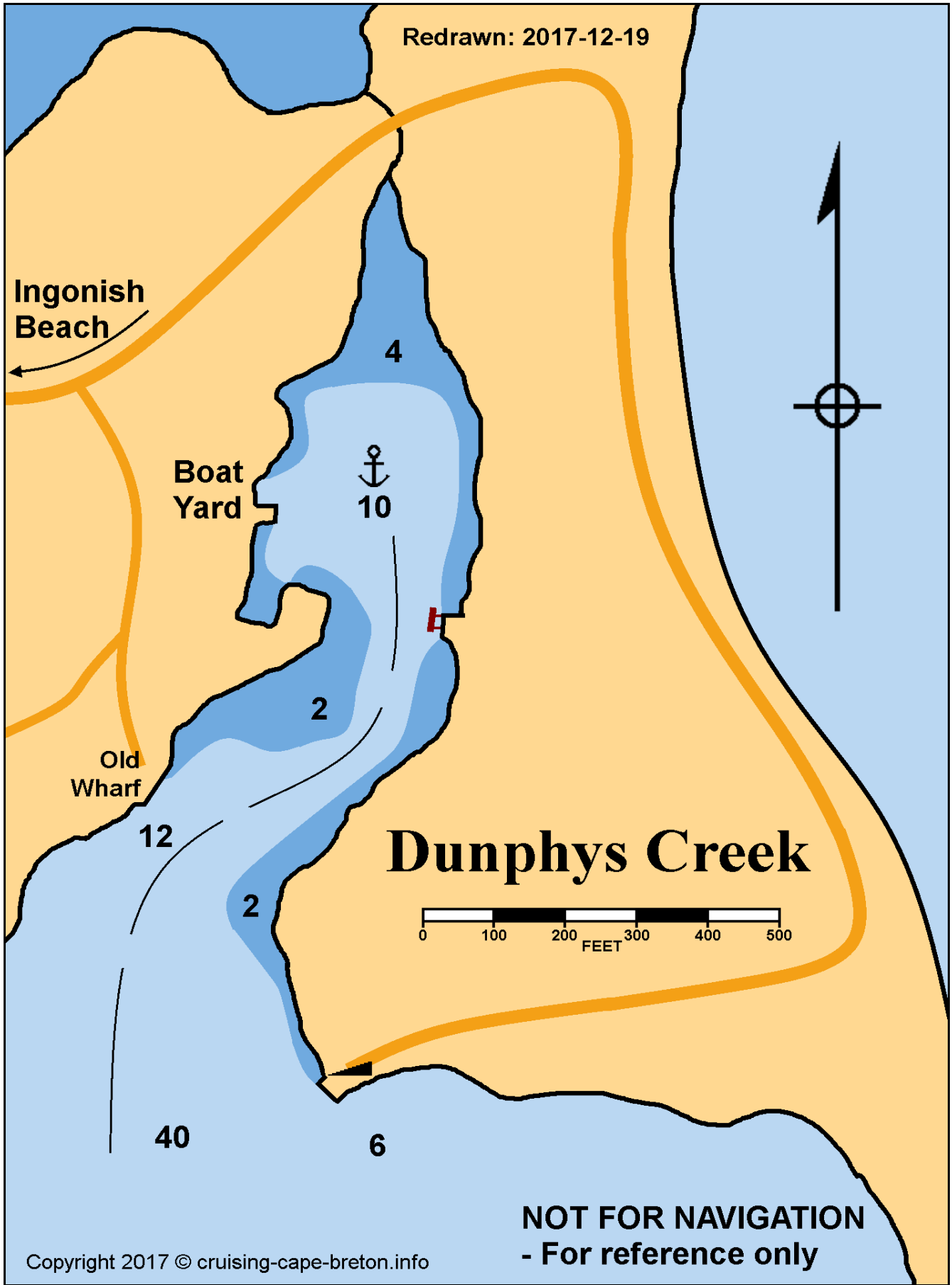
Redrawn: 2017-12-19

Ingonish Beach

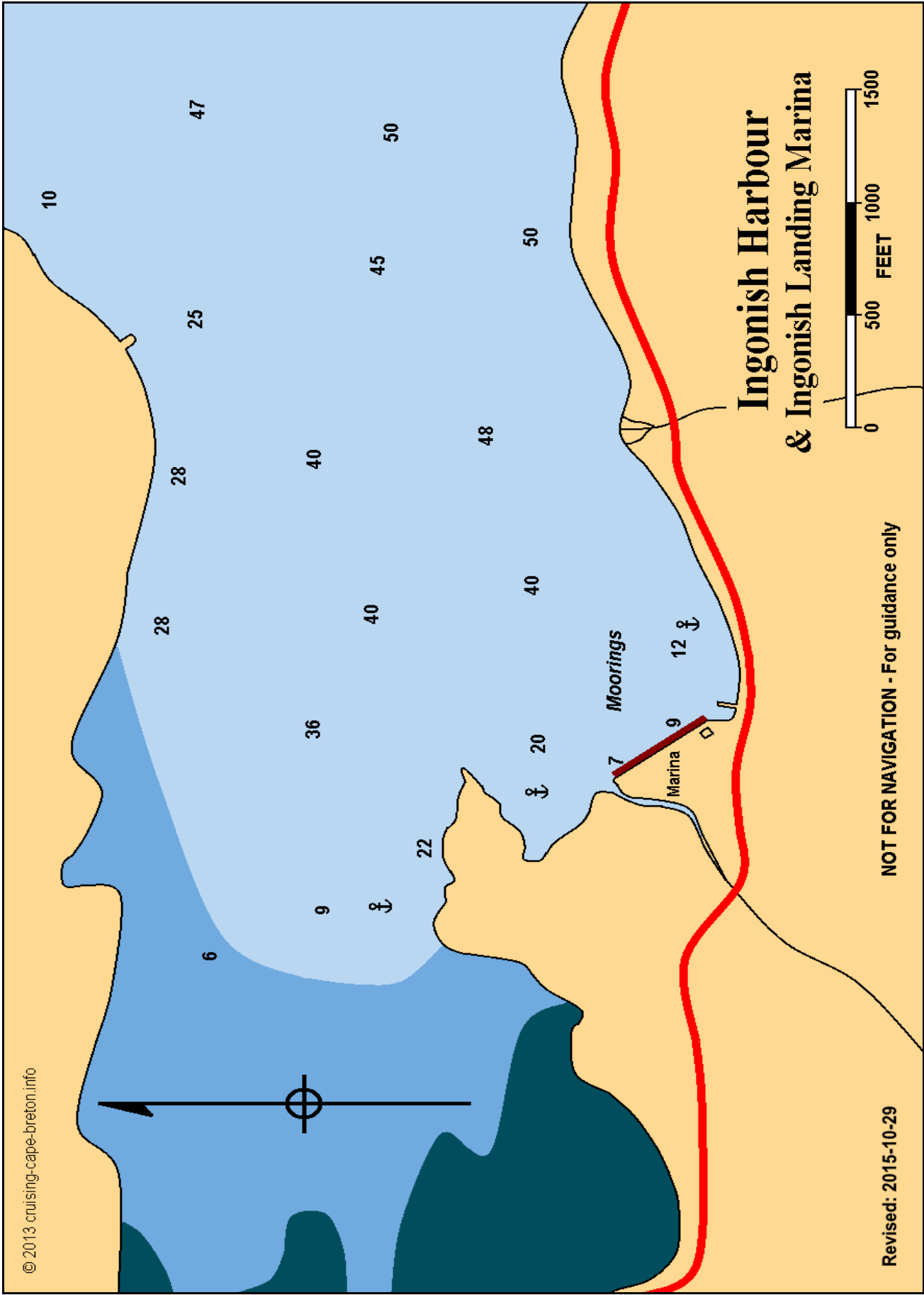
Boat Yard

Old Wharf

# Dunphys Creek



**NOT FOR NAVIGATION  
- For reference only**



NOT FOR NAVIGATION - For guidance only

Revised: 2015-10-29