

Ross Pond

CHS Chart No: 4279 — Bras d'Or Lake

Amenities: Marina Cape Breton (Sauer Boatbuilding & Maintenance Ltd): dockage, maintenance

Description:

Ross Pond is a well protected anchorage at the extreme north-west corner of West Bay, approximately two miles north-west of the Crammond Islands. A small marine facility, Marina Cape Breton, on MacLeod Creek offers dockage and maintenance. Least depth on approach is 6 feet.

Navigation:

Approaches to Ross Pond may be on either side of Dumpling Island. If the passage between Dumpling Island and MacKenzies Point is selected, favour the MacKenzies Point shore. A long hooked shoal extends westward from the island to about the mid point in the channel where there is 8 feet of water, and gradually shoals toward the Dumpling Island shore.

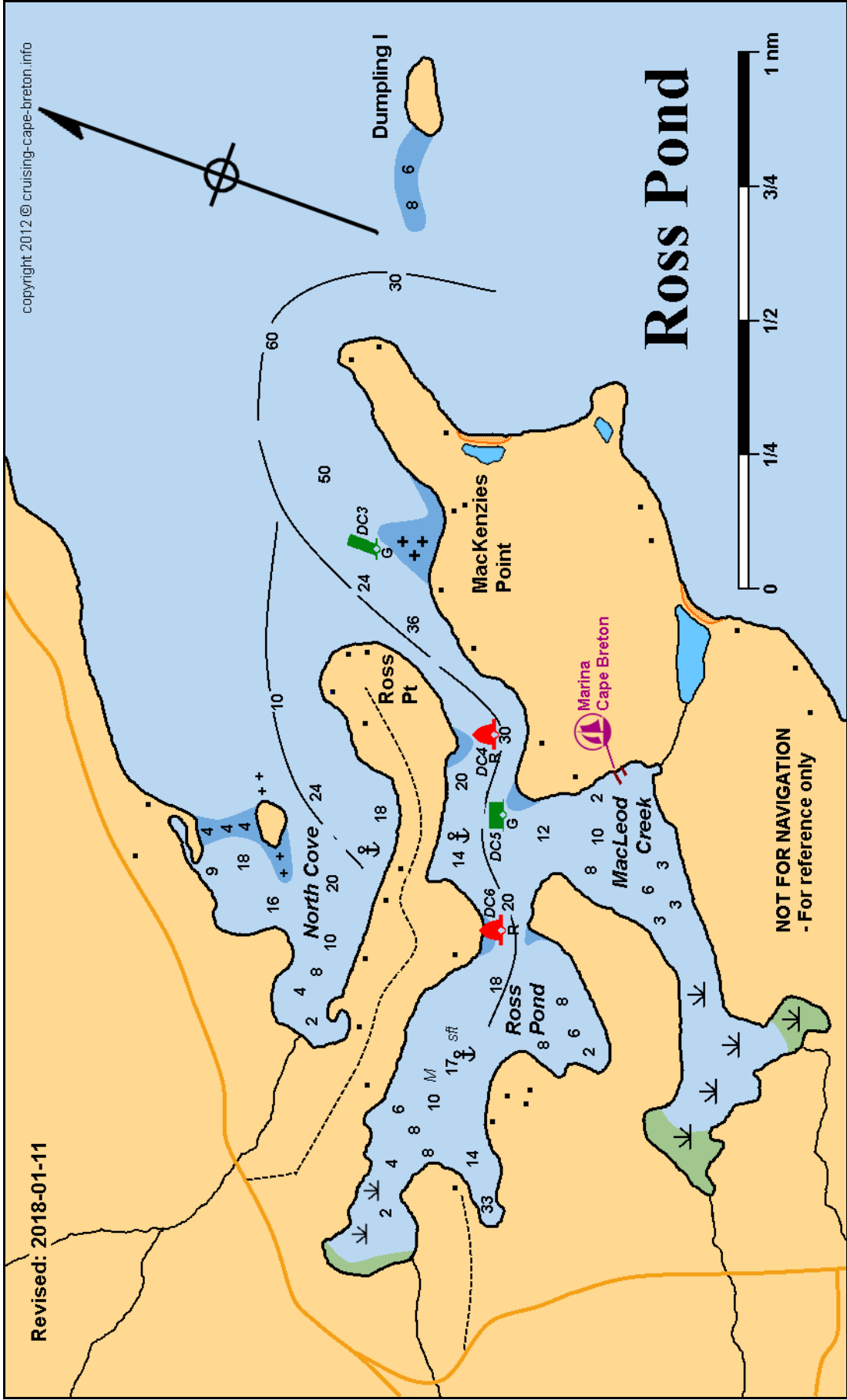
The alternate route to the north of Dumpling Island is in deep water for the entire approach.

The channel into Ross Pond opens on a bearing of 215T and is marked by two port-hand and two starboard-hand buoys. The port-hand buoy at the entrance guards against rocks extending from the MacKenzie Point shore and the balance of the spars mark a deep meandering channel between sandbars past MacLeod Creek and into Ross Pond.

Best anchorage is along the north shore at the locations indicated.

North Cove, across the peninsula from Ross Pond is less well protected than Ross Pond but still provides secure anchorage at the indicated mark. A bold submerged bar, carrying only 4 feet of water extends northward from the small island in the centre of the cove to the sandbar on the north shore. Entry into North Cove must be made by keeping the small island to starboard. The two sand beaches along the south shore of MacKenzies Point are excellent for swimming.

Updated: 2018-01-11



Revised: 2018-01-11

copyright 2012 © cruising-cape-breton.info

Ross Pond

NOT FOR NAVIGATION
- For reference only