

# Neils Harbour

**CHS Chart No:** 4363 – Cape Smoky to St Paul Island

**Amenities:** dockage, water, gas & diesel, pharmacy, hospital, restaurant, Victoria Co-operative Fisheries (902-336-2541, 902-285-0009(C), fuel, water, marine supplies), Neils Harbour Co-op (902-336-2827, grocery, hardware, NSLC Agency, ice, propane, ATM), Comfort Station (902-336-2465/2546/2401, washrooms, shower, laundromat, 2.3 km), Dixon's Zodiac Seafari (1-855-259-4122, whale watching tours).

**Harbour Authority:** NVSPHA<sup>1</sup>, 902-285-0010, e-mail: nvspha@hotmail.com.  
Fees may apply for dockage.

## **Description:**

The harbour is one of the few along this coast which is accessible in a strong easterly wind, having good depths on the approach. However the harbour is **very** small, and should be avoided, except in an emergency, during Lobster Season, which generally runs from the second Saturday in May to the second Wednesday in July, but may vary (see website for latest info). Despite the small size of its harbour, Neils Harbour offers the most amenities of any harbour on the east side of the highlands coast. The Chowder House Restaurant (902-336-2463) is right at the harbour, and has a reputation for excellent seafood. Fuel (Gas & Diesel) is usually available at the fuel dock (call Victoria Co-operative Fisheries), depth permitting, or can be jugged from the XTR gas station just a short distance from the dock. Water may be jugged from the building beside the fuel dock.

Cruisers should tie up, or raft to a vessel, on the west side of the long wharf or the wharf on the south side, unless/until directed otherwise.

## **Navigation:**

Tidal range on a 'large tide' is about 4 feet. Use tidal predictions for Dingwall?

From the fairway light and bell buoy, **KD** (4647.7/6018.2), moored 1 M SE of the entrance breakwater, a course of 308T leads to the harbour entrance.

Lobster crates on trot-lines, marked by red floats, obstructing access to the wharf, may remain many weeks after lobster season. Proceed with caution.

The outer area of the harbour has a rocky bottom. Anchoring in this area is inadvisable.

Revised: 2017-08-23

---

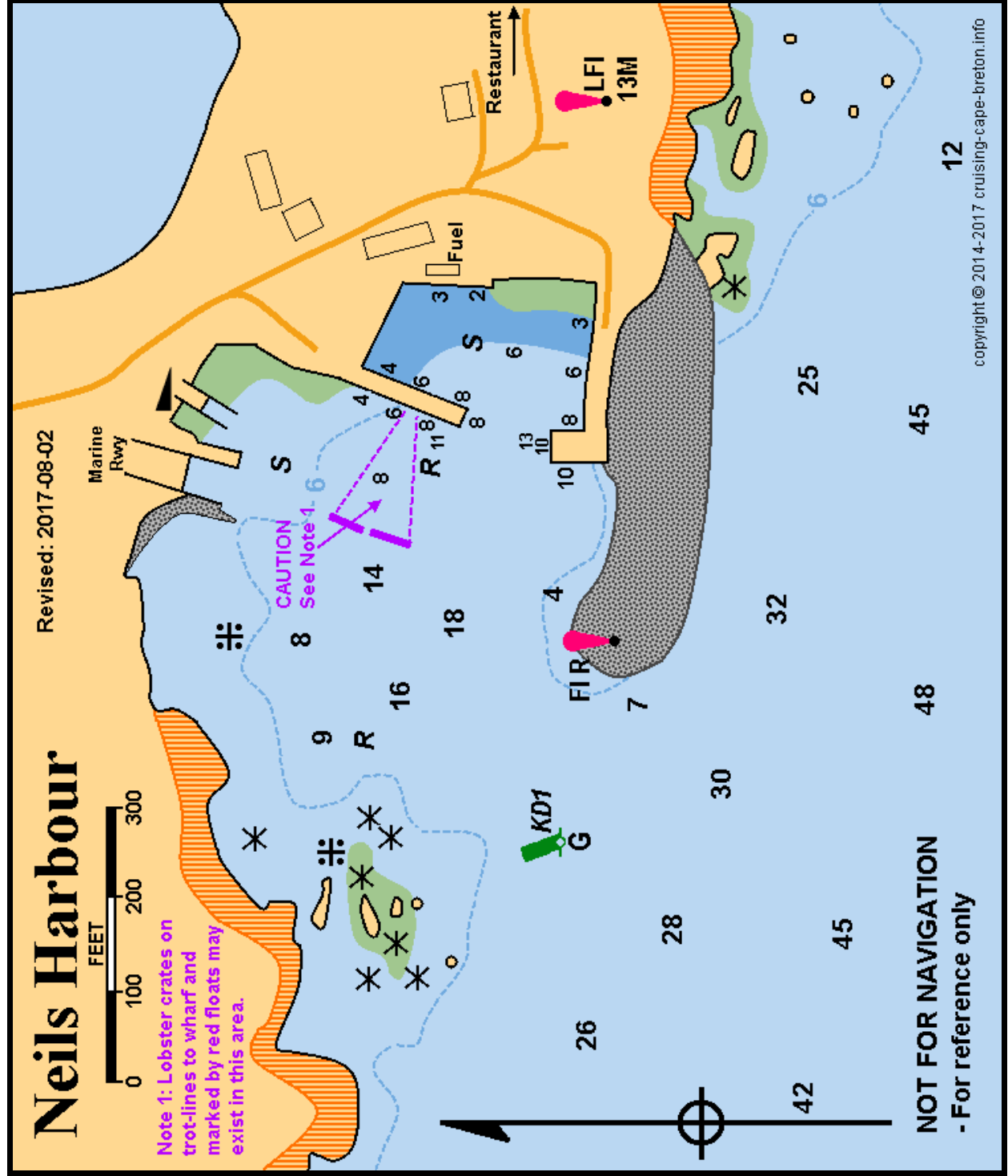
<sup>1</sup> **NVSPHA**, North Victoria Six Ports Harbour Authority, with offices located in Neils Harbour, is responsible for the harbours of Dingwall, White Point, New Haven, Neils Harbour, Ingonish, Ingonish Beach, and Ingonish Ferry.

# Neils Harbour

Revised: 2017-08-02



Note 1: Lobster crates on trot-lines to wharf and marked by red floats may exist in this area.



**NOT FOR NAVIGATION**  
- For reference only