

Murphys Pond (Port Hood)

CHS Chart No: 4462 – St Georges Bay
4448 – Port Hood, Mabou Harbour, and ~~Havre-Boucher~~

Amenities: dockage, water, power.

Co-Op food store, Admiral Dining Room & Lounge 2.2 km (1.4 miles) from harbour or 1.4 km (0.9 miles) from beach at Port Hood Provincial Day Park.

Clove Hitch Bar & Bistro 3.1 km (1.9 miles) or 0.8 km (½ mile) from beach.

NSLC 3.6 km (2.25 Miles) or 500 yards from beach.

Harbour Authority: Harbour Authority of Port Hood
PO Box 193, Port Hood, Inverness County, NS, B0E 2W0
Phone: (902)787-2058
Email: haporthood@gmail.com

Description:

CAUTION: The submerged ruins of a causeway/breakwater exist between the northern part of Port Hood Island and the mainland and is marked by yellow bouys. May be crossed at certain points by shallow draught boats. Local knowledge advised.

Navigation: Buoy **VX1** (4601.46/6132.64) provides an approach point.

Harbour reportedly dredged to 8 feet in Spring 2015.

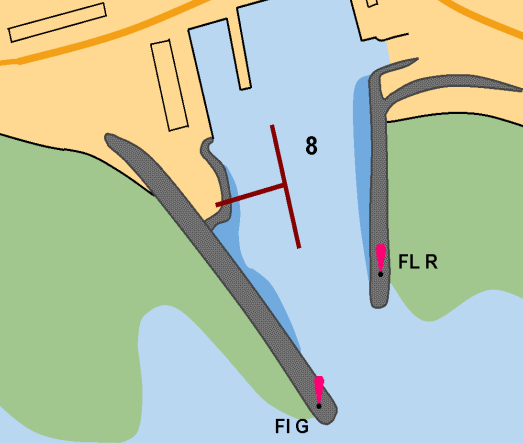
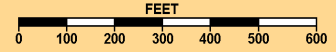
NOTE: The flashing green light on the shore is a range light for entering Port Hood Harbour from the south, and is unrelated to Murphys Pond Harbour.

Updated: 2015-12-18

Copyright © 2015 Cruising-Cape-Breton.com

Murphys Pond

Murphys Pond (Port Hood)



Port Hood →

8

FG
60' !

CAUTION: Provisional information
NOT FOR NAVIGATION: For reference only

