

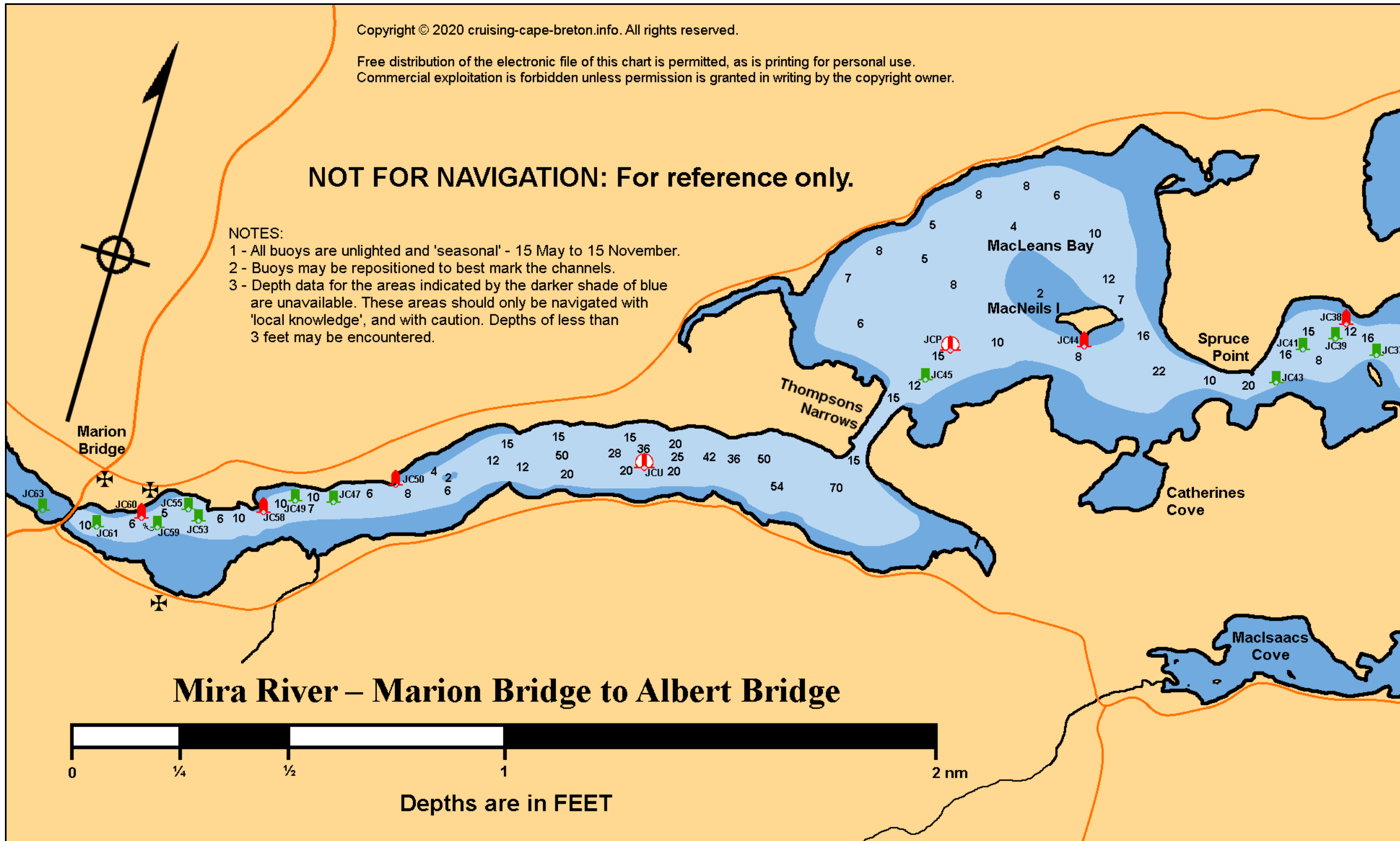
Copyright © 2020 cruising-cape-breton.info. All rights reserved.

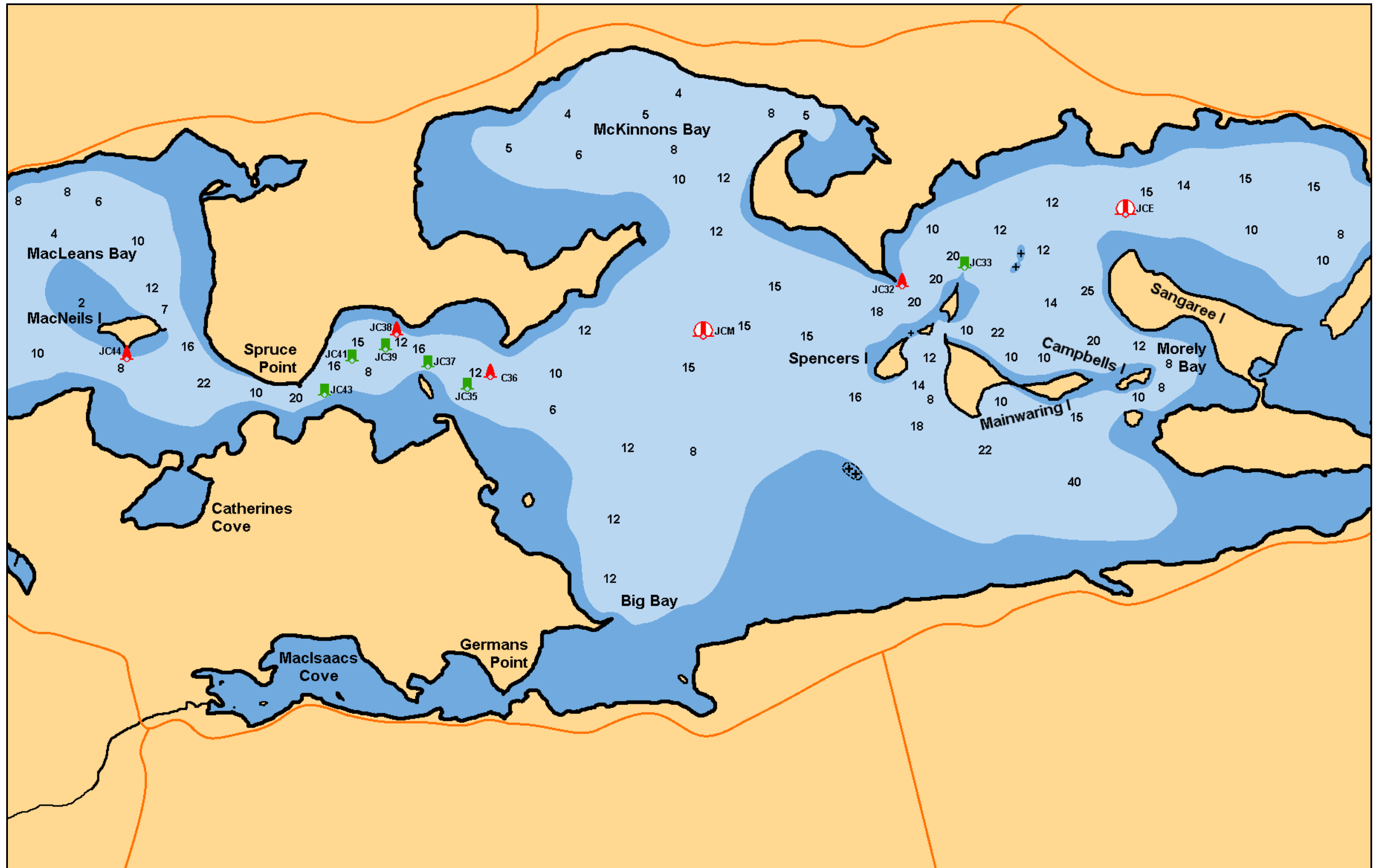
Free distribution of the electronic file of this chart is permitted, as is printing for personal use.
Commercial exploitation is forbidden unless permission is granted in writing by the copyright owner.

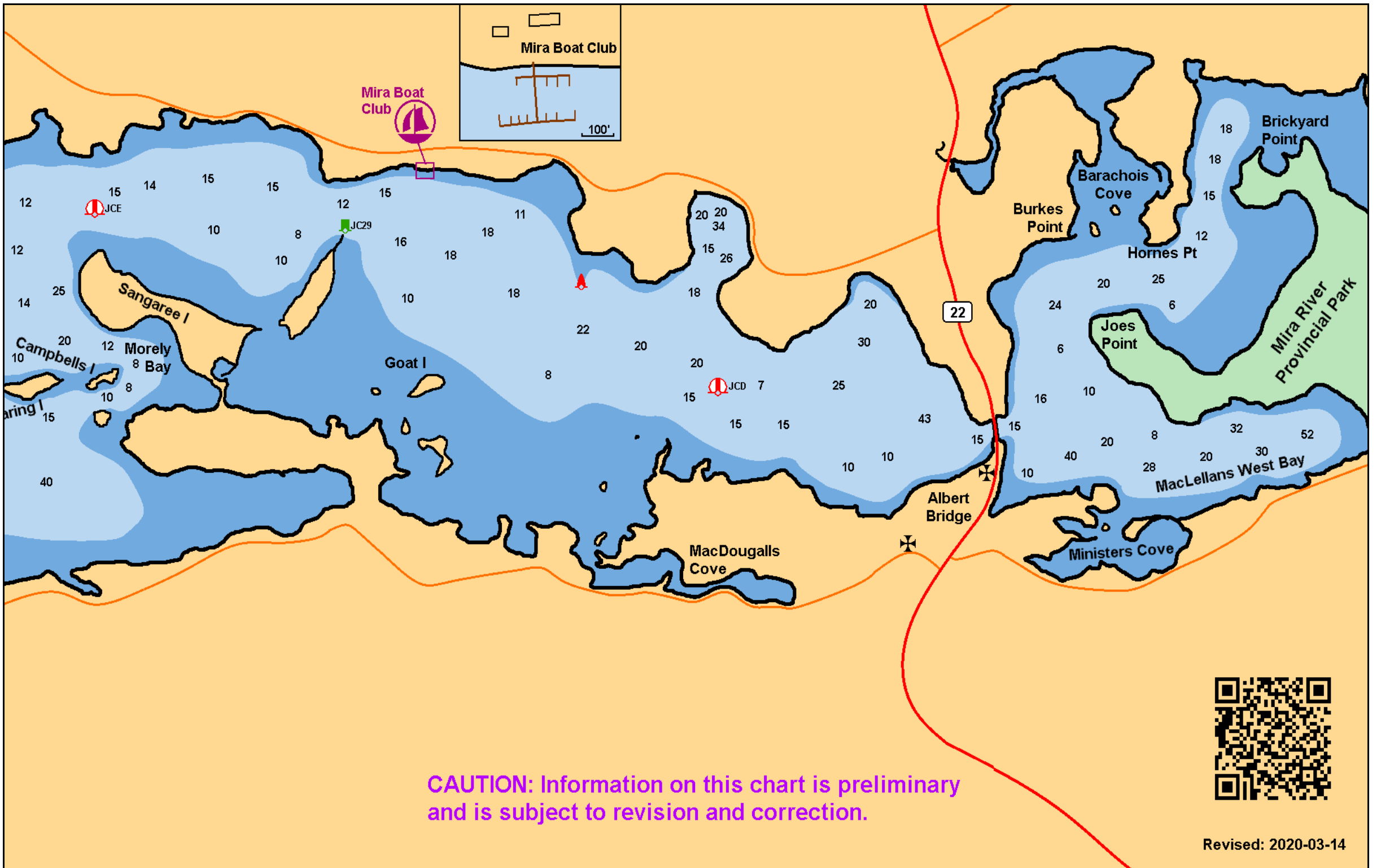
NOT FOR NAVIGATION: For reference only.

NOTES:

- 1 - All buoys are unlighted and 'seasonal' - 15 May to 15 November.
- 2 - Buoys may be repositioned to best mark the channels.
- 3 - Depth data for the areas indicated by the darker shade of blue are unavailable. These areas should only be navigated with 'local knowledge', and with caution. Depths of less than 3 feet may be encountered.







CAUTION: Information on this chart is preliminary and is subject to revision and correction.

