

Margaree Harbour (Belle Côte)

CHS Chart No: 4463 – Chéticamp to Cape Mabou
4449 – Chéticamp, Grand Étang and Margaree Harbours

Amenities: dockage, power, diesel, Seaside Restaurant and Lobster Pound Bistro (at Island Sunset Resort, 0.4 mile, 902-235-2669)

Harbour Authority: Harbour Authority of Margaree Harbour
General Delivery, Belle Côte, Inverness County NS B0E 1C0
Phone: 902-235-2608?
E-mail: u/k

Description: Depths in the harbour and approach are subject to change due to silting.

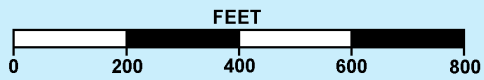
Navigation should not be attempted without the latest local information.

Inside the breakwaters a shallow, buoyed channel leads to the fishing harbour on the Belle Côte side of the river. Depths of up to 8 feet are available at the wharves.

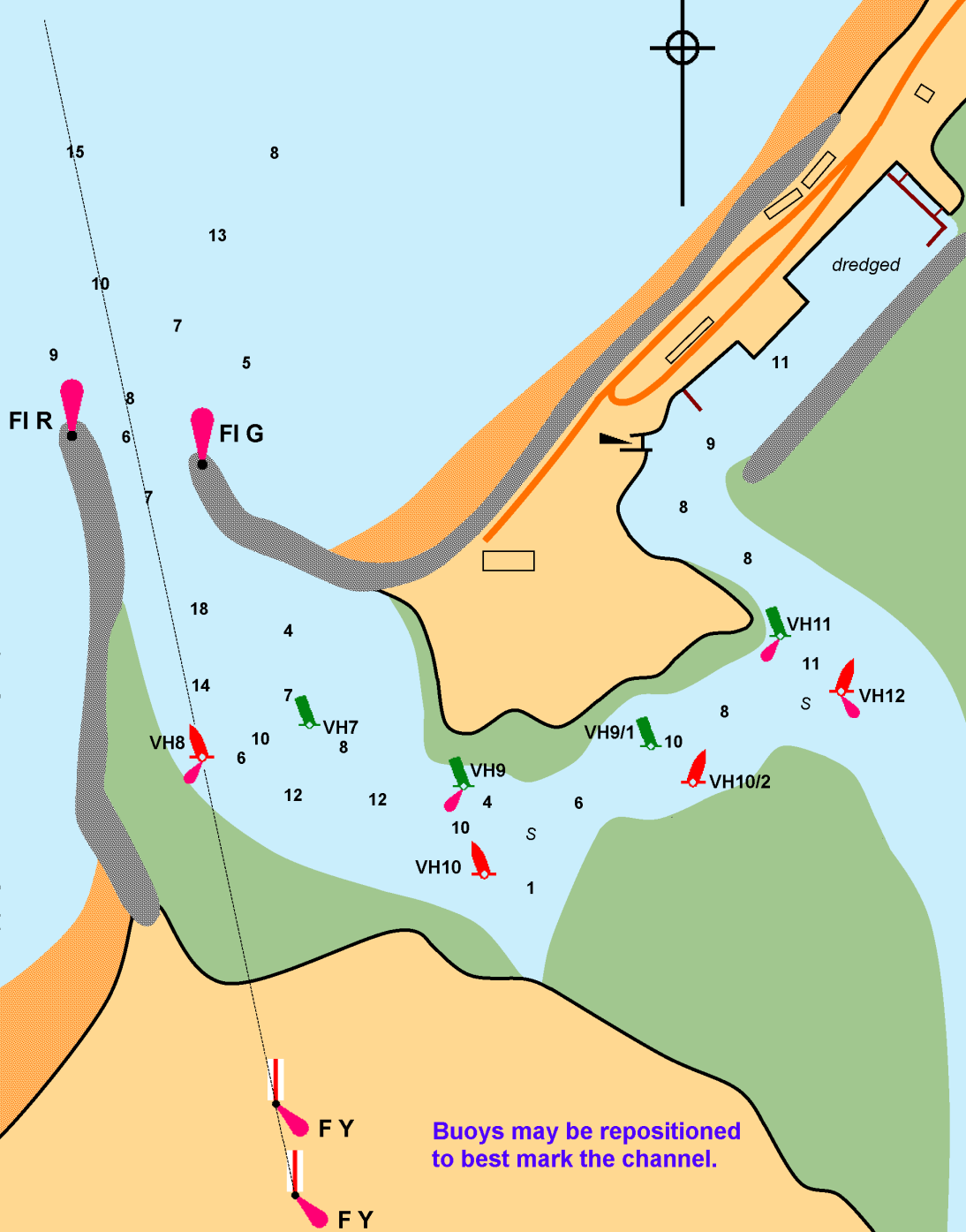
Navigation: An approach waypoint of 4627.0/6107.0 will place you 0.4 nm from the breakwaters and on the leading lights that bear $166\frac{1}{2}T$, shown from white square towers with red tops and red vertical stripes. Use tidal predictions for Margaree Breakwater.

Updated: 2016-04-20

Margaree Harbour (Belle Côte)



Copyright © 2016 cruising-cape-breton.info



Buoys may be repositioned to best mark the channel.

Revised: 2018-02-21

NOT FOR NAVIGATION: For reference only