

# Mabou Harbour

**CHS Chart No:** 4462 – St Georges Bay  
4448 – Port Hood and Mabou Harbour

**Amenities:** Fuel & Propane (Esso Station), Food & Liquor (Mabou Freshmart) Credit Union, Restaurants: Mabou River Inn (baked goods & Pizza), Red Shoe Pub, Shining Waters Eatery (& bakery!), and The Mull Café.

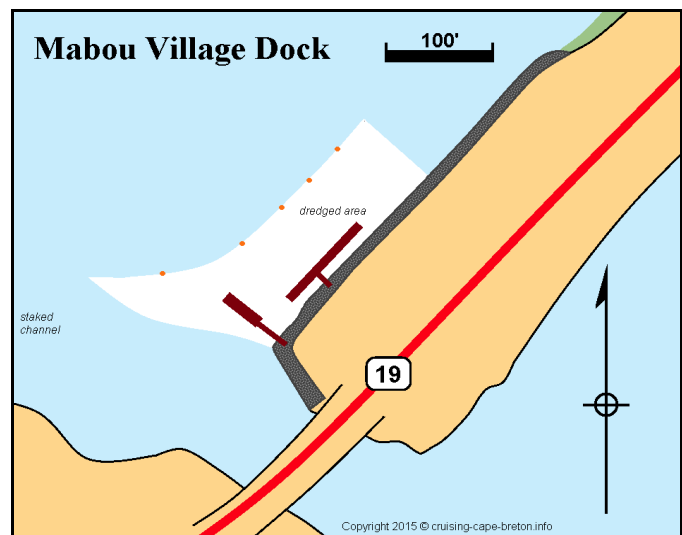
**Harbour Authority:** Harbour Authority of Mabou (Fishing Harbour only)  
823 Mabou Harbour Road, RR #3, Mabou NS B0E 1X0  
**Email:** haofmabou@outlook.com

## Description:

From the cruiser's point of view, this harbour is arguably the finest on the western coast of the island. It boasts numerous sheltered places to anchor, a small fishery harbour, and a docking facility right in the village, from where it's less than ½ mile (800 m) to everything. It has three highly-rated eateries, as well as pizza and baked goods from the Mabou River Inn. The Mabou Sailing and Boating Club is located in Northeast Cove. Holding is good and moorings are available.

## Navigation:

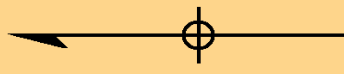
Tidal range on a large tide is 4.5 ft, use tides for Port Hood. Note that on a large tide there can be a marked diurnal component. Chart 4448 is essential for this harbour. Make an approach from the fairway buoy **VJ** (4605.5/6129.5) as shown on the sketch chart (next page). A bar extends across the harbour mouth with only 3 feet at MLLW, according to the Mabou Sailing and Boating Club. Sailboats should enter on the top half of the tide. The current in the narrow channel can reach 4 knots. The channel is well marked by buoys. A local fisherman says to 'Favour the green side', and if you should touch bottom, it's only sand. Once past the small fishery harbour, the harbour opens up with good depths. Just watch for the small buoys marking the channel and shoals. The dock at the head of the harbour, by the road into the village, is reached by a channel marked by stakes. The recently dredged out area is marked by orange floats. Years ago, schooners would come right up to the bridge to load or unload cargoes on the southwest shore.



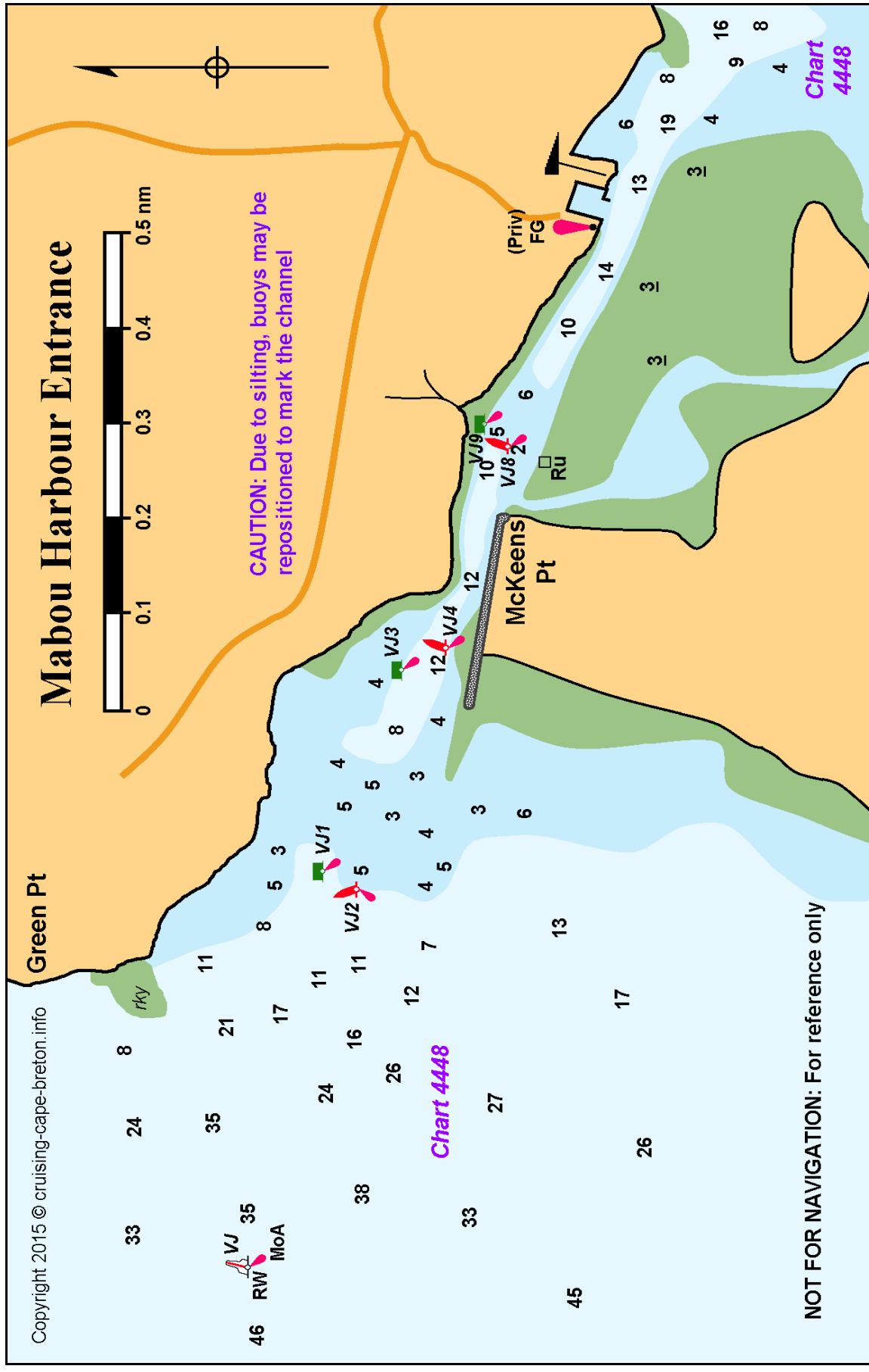
Updated: 2017-05-03

Copyright 2015 © cruising-cape-breton.info

# Mabou Harbour Entrance



CAUTION: Due to silting, buoys may be repositioned to mark the channel



NOT FOR NAVIGATION: For reference only