

Louisbourg Harbour

CHS Chart No: 4375 – Guyon Island to Flint Island
4376 – Louisbourg Harbour

Amenities:

Dockage, liquor store, eateries, convenience stores (2), hardware store, marine store

Harbour Authority:

Harbour Authority of Louisbourg
7495 Main Street, Louisbourg, NS B1C 1H6

Port of Entry:

Louisbourg is an official Port of Entry.

Description:

Despite its large harbour, Louisbourg is a relatively small village, and apart from several restaurants that cater to tourists in the summer, it has limited amenities. The main tourist attraction is the Fortress of Louisbourg National Historic Site. Louisbourg harbour has good depths and at one time was a major coal shipping port, as it is generally ice-free in winter.

Navigation:

An approach waypoint of 4554.17/5956.00 will place you close on the range into the harbour. Fixed yellow leading lights with red stripes on white range boards lead a course of of 268°T. The approach to the harbour and navigation within the harbour are well buoyed. See Chart 4376, as the buoys are not shown on the sketch chart. Once past the buoy **JTA** a turn should be made toward **JTB** and the wharves in the Northeast Arm. A wharf intended for visitors is near the head of the arm. The wharf has a pontoon but since few visitors seem to visit Louisbourg by boat, the wharf and pontoon are often commandeered by fishing boats. Good anchoring can be found in 10 to 15 feet in the Northwest Arm or off the fortress, depending on the wind. Use tidal predictions for Louisbourg or Point Tupper.

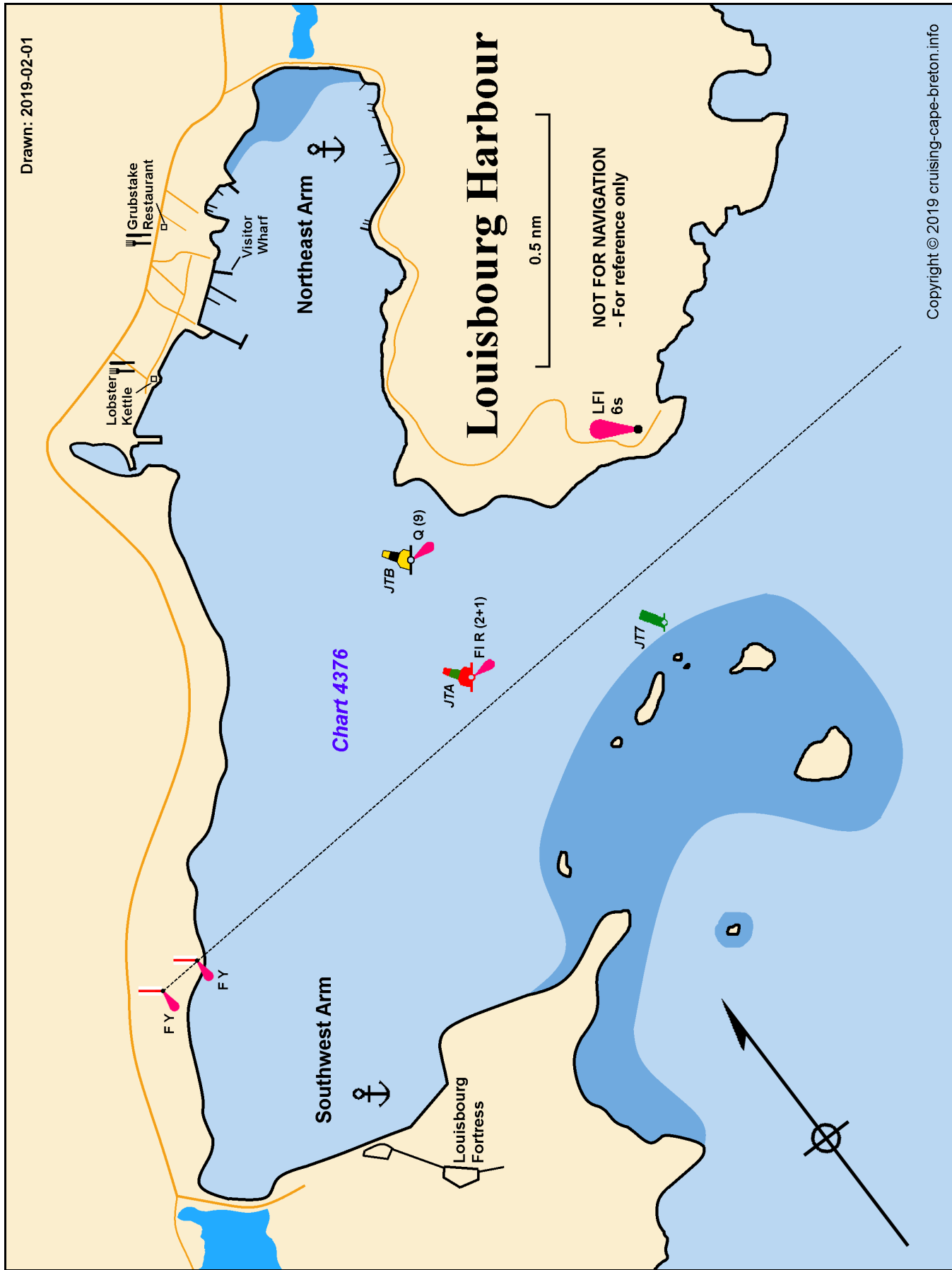


Chart 4376

Louisbourg Harbour

NOT FOR NAVIGATION
- For reference only