

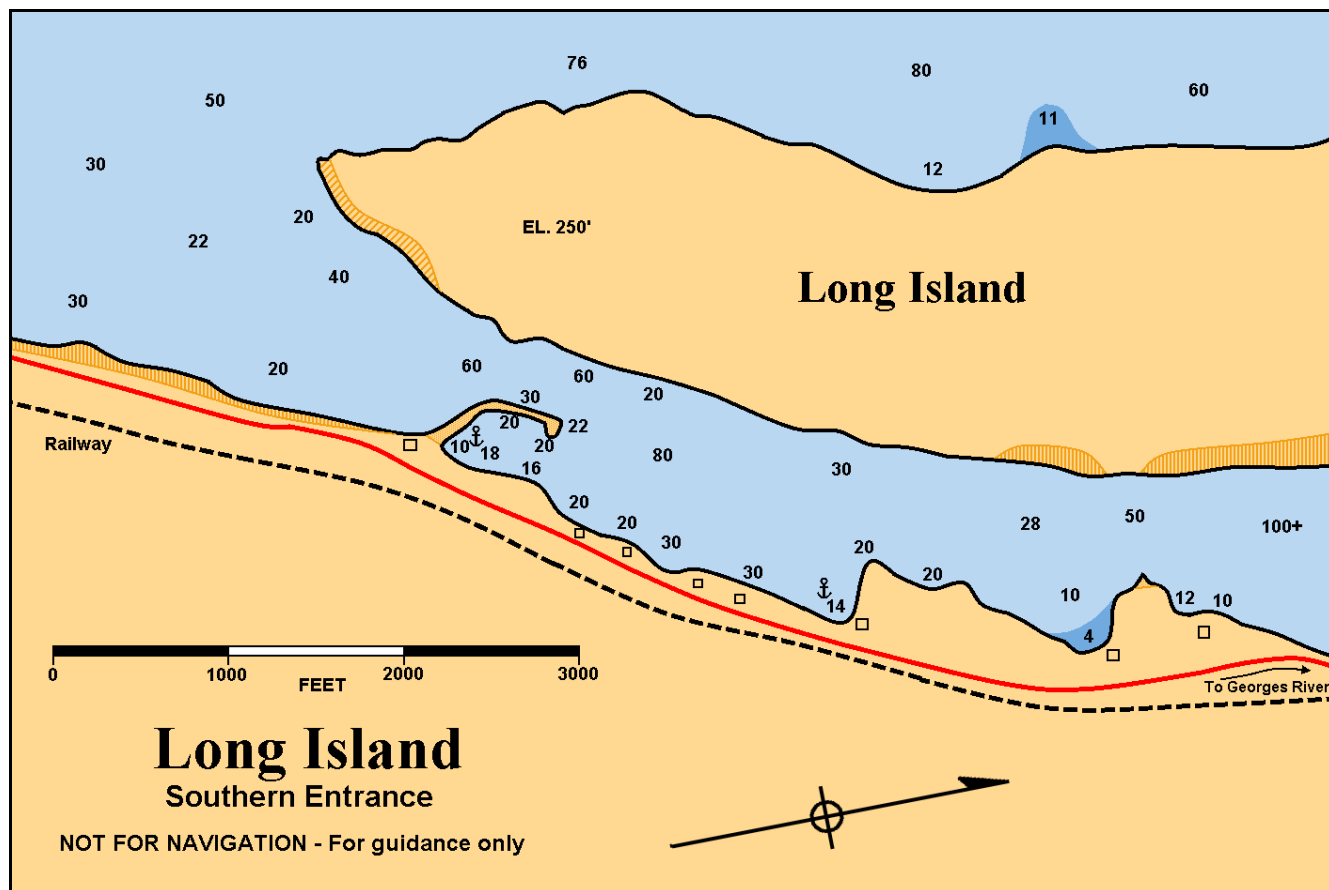
Long Island

CHS Chart No: 4277 – Great Bras d'Or, St Andrews Channel & St Anns Bay

Amenities: none

Description:

The narrow, 2-mile long fiord is formed by Long Island and the mainland of Cape Breton island on the eastern shore of St Andrews Channel. Generally, the fiord is less than 500 yards wide the whole of its length. A long hooked sandbar restricts the southern entrance to a width of only 100 yards, however the water is bold on both sides. The northern entrance is also restricted by Mouse Island, with the deepest and widest passage being between Mouse Island and Long Island. The best anchorage in the area is behind the sandbar. The other anchorage indicated on the chart does not provide the same measure of protection as the sandbar from strong southwesterly winds.



Updated: 2014-12-05