

# MacPhersons Pond (Lochan Fad)

CHS Chart No: 4279 – Bras d'Or Lake

## Amenities:

None

## Description:

MacPhersons Pond, formerly known as Lochan Fad (Gaelic for Long Pond) is a typical example of 'barachois' construction found along southern shores on the Bras d'Or Lakes. MacPhersons Pond is still under construction in that an entrance to the encircled pond still exists for small craft. In time, unless some means is used to maintain the opening, nature will close the gap isolating the waters, creating a stagnant pond. In eons of time, the pond will fill with mud and silt forming a marsh which will eventually grow into a point of land reclaimed from the sea.

## Navigation:

A shallow channel still remains between the bars. In 1974 Roy Mac Keen found the channel carried 6 feet, however, the authors have been unable to determine the current depth, and only noted shallow draft boats in the pond in 2012. This entrance channel is usually marked by the local residents with small low buoys, fairly close to the bar entrance.

**Local knowledge is essential. Use extreme caution.**

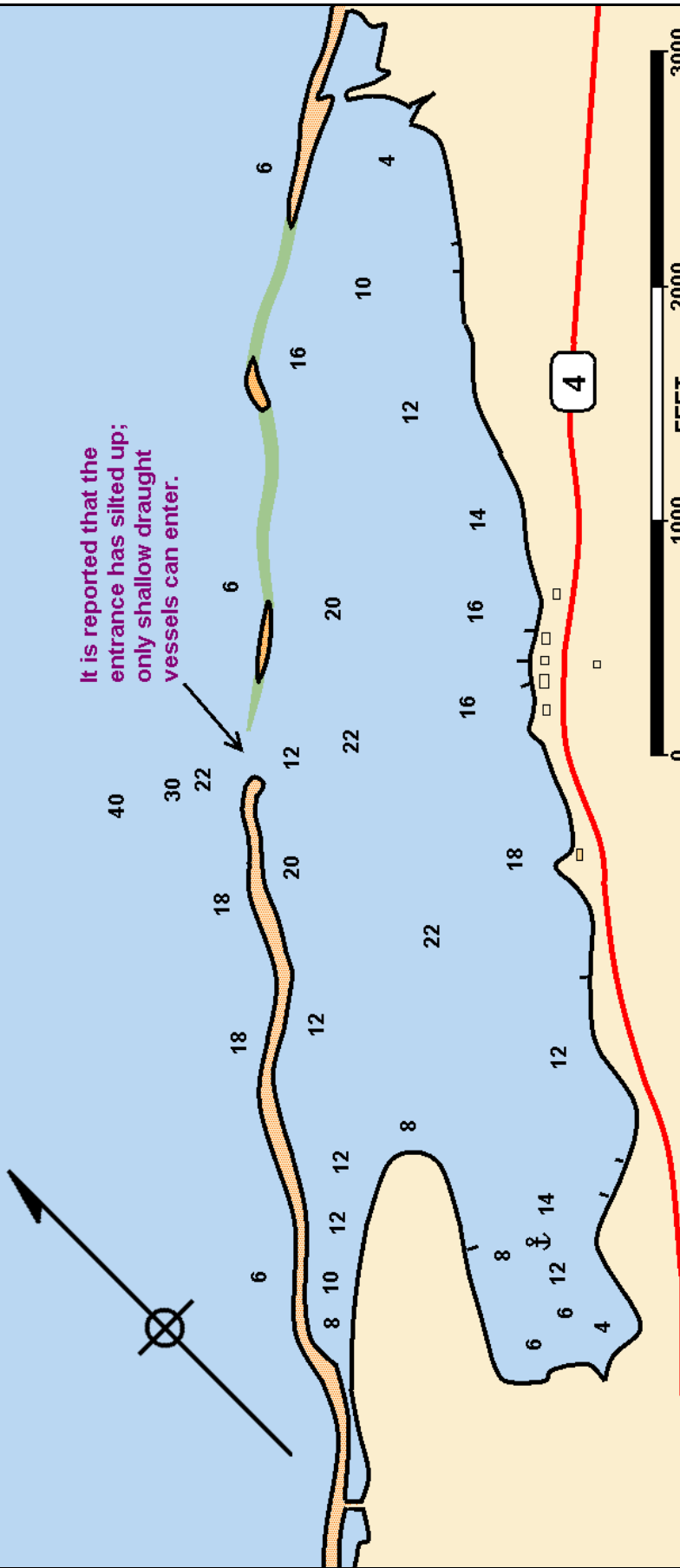
Anchorage is said to be excellent throughout the pond in mud, with the best protection in the cove to the southwest of the entrance.

**Update 2014-12-21:** It is reported that the entrance has silted up, and is impassable for all but dinghies.

Updated: 2014-12-21

Revised: 2014-12-21

2014 © cruising-cape-breton.info



It is reported that the entrance has silted up; only shallow draught vessels can enter.

**CAUTION:** Soundings date from 1974. Depth at entrance varies. Local knowledge is essential.  
**NOT FOR NAVIGATION - For guidance only**

## MacPhersons Pond Lochan Fad (Long Pond)