

Little River Harbour (Breton Cove)

CHS Chart No: 4367 – Flint Island to Cape Smoky

Amenities: Dockage, launch ramp, water (non-potable), fuel (diesel only), swimming beach
Fees apply for dockage.

Description:

Little River harbour is a convenient stopover for those making an early entrance or late exit to/from the Great Bras d'Or Channel, being the nearest well-protected harbour on the ocean side. It is a pleasant stopover for those cruising the coast of Cape Breton Island. A fine, sandy beach on the south side of the southern breakwater is a popular swimming spot in summer. The harbour is quite shallow and is best suited for boats with a draught of 5 feet or less. Piped water on the wharves is pumped from MacDonalds Pond at the rear of the harbour and is considered non-potable.

CAUTION: Concrete-slab anchors beneath the floating wharves, carrying 3' or less, may protrude far enough to snag the keels of boats. Choose your docking spot carefully.

The harbour is managed by the Little River Harbour Authority.
Harbourmaster: Wendell Murphy 902-929-2262

This is a congested harbour during 'Lobster Season', which generally runs from the second Saturday in May to the second Wednesday in July, but may vary (see website for latest info). Cruisers should avoid entering, except in an emergency, during this period. Lobster harvesters are usually under way before first light and back by late morning or early afternoon.

There are often lobster pounds in the harbour, even AFTER lobster fishing season. Vessels should refrain from discharging sewage. A portable toilet is usually located on the wharf.

What's in a name? Generally referred to as Little River, the names Breton Cove or Briton Cove are also used by some, although Breton Cove is about 0.6 nm to the north (This is spelled Briton Cove on the CHS chart and in the Sailing Directions.). To confound things further, the List of Lights lists the entry range as the Breton Cove Range, and the fairway buoy, **KN**, as the 'Breton Cove light and bell buoy', yet the light on the groyne is referred to as the 'Little River Inner'.

Navigation:

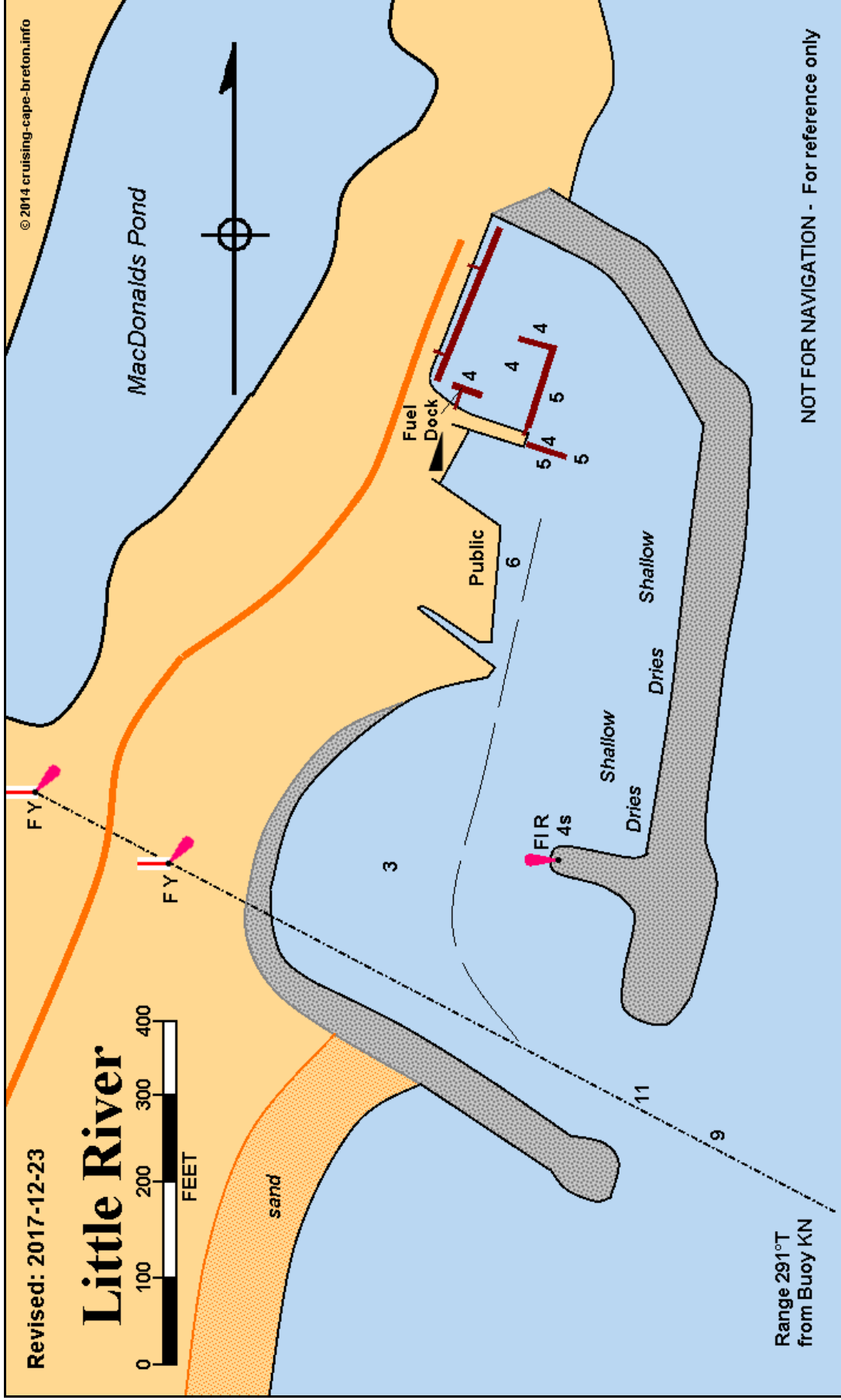
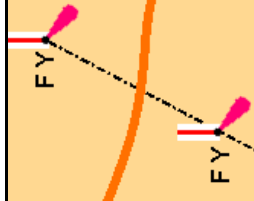
Tidal range on a 'Large tide' is about 4.4 feet. Use tidal predictions for North Sydney (Add ~10 minutes and ~0.4 ft)

Fairway light and bell buoy, **KN** (4626.5/6026.8), moored 0.6 nm off the entrance puts one on the range leading into the harbour, on a bearing of 291T. When inside the breakwaters favour the west side of the harbour as the seaward side is shoal, and silting occurs close to the small groyne. Boats with up to five-foot draft can use the Public wharf. The floating wharves generally have only 4 to 5 feet of water. There is no space to anchor.

Revised: 2017-12-29

Revised: 2017-12-23

Little River



Range 291°T
from Buoy KN

NOT FOR NAVIGATION - For reference only