

Inverness Harbour (MacIsaac's¹ Pond)

CHS Chart No: 4463 – Chéticamp to Cape Mabou

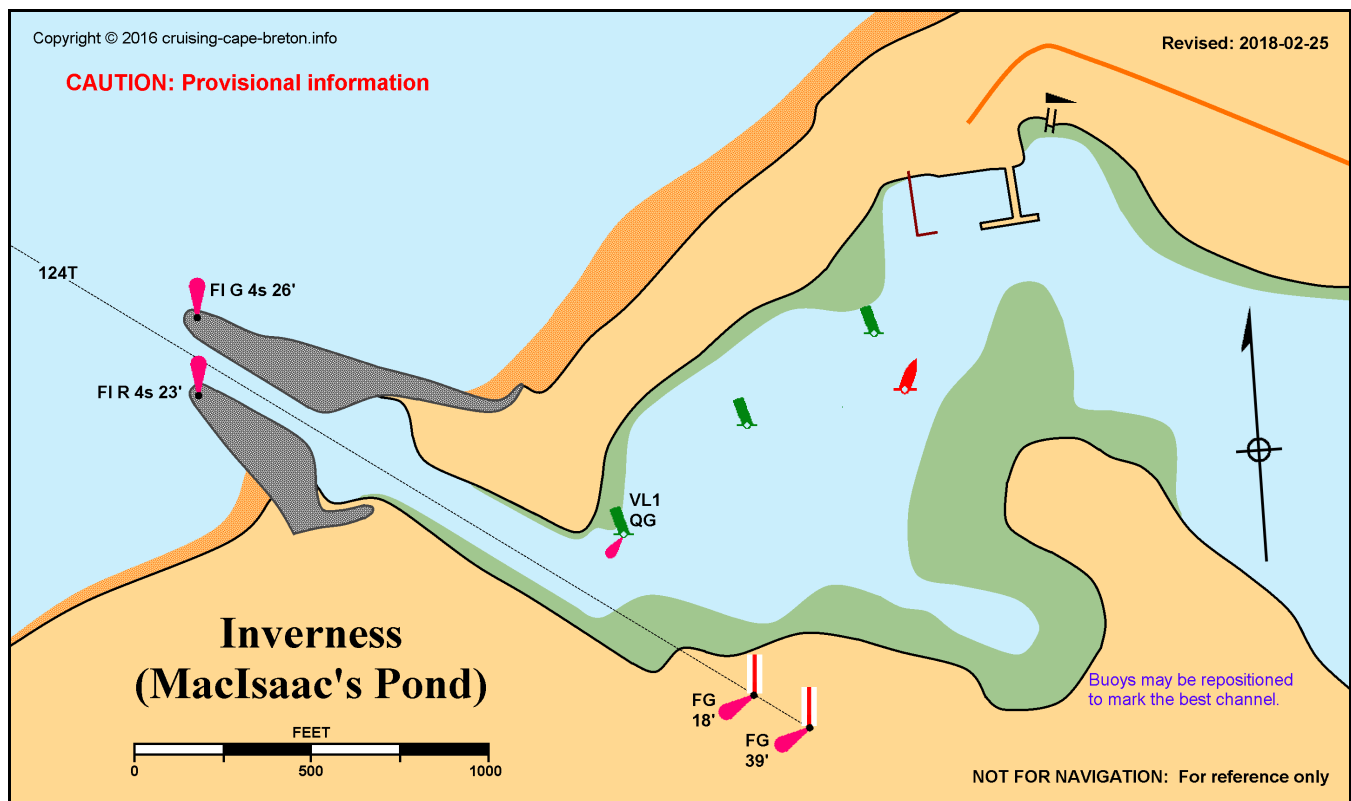
Amenities: The settlement of Inverness has most amenities within 1½ km (1 mile) of the dock: Hospital, pharmacy, eateries (3+), NSLC, hardware store, grocery, etc. Diesel is available at the wharf.

Harbour Authority: Harbour Authority of Inverness
PO Box 757, Inverness, Inverness County, NS B0E 1N0
Harbour Manager: Scott MacPherson
Phone: 902-258-5781(C)
Email: hainverness@gmail.com

Description:

Navigation:

Use tide tables for Margaree Breakwater. An approach waypoint of 4614.3/6120.7 will place you near the leading line about 1 nm from the breakwaters. Shoal water of less than 6 feet extends 0.1 nm from the breakwaters, and less than 20 feet out to ¼ nm. The entrance is subject to silting. Depths of 3 to 6 feet are reported at the wharves. Sailboats are known to berth here. Depths within the harbour are unknown to the authors. **Local knowledge is essential.**



Updated: 2018-09-04

¹ The spelling varies: Mclsaac Pond, MacIsaac's Pond. MacIsaac's Pond seems to be the most common.