

'Intercoastal Waterway' — Lennox Passage to West Arichat Harbour

CHS Chart No: 4301 — Canso Harbour to Strait of Canso

Amenities: West Arichat Esso (902-226-3592) gas, diesel, propane, small convenience store, ATM, coffee shop, donuts, pizza?

Description: This area provides a well-protected waterway between West Arichat Harbour and Lennox Passage, for shallow draft powerboats requiring an overhead clearance (air-draft) of less than 8 feet.

West Arichat has a snug harbour with a well-buoyed entrance. A gas-station-convenience-store is about a kilometre from the public dock, though one may halve that distance by a dinghy ride to the beach by the causeway to Crichton Island.

Navigation:

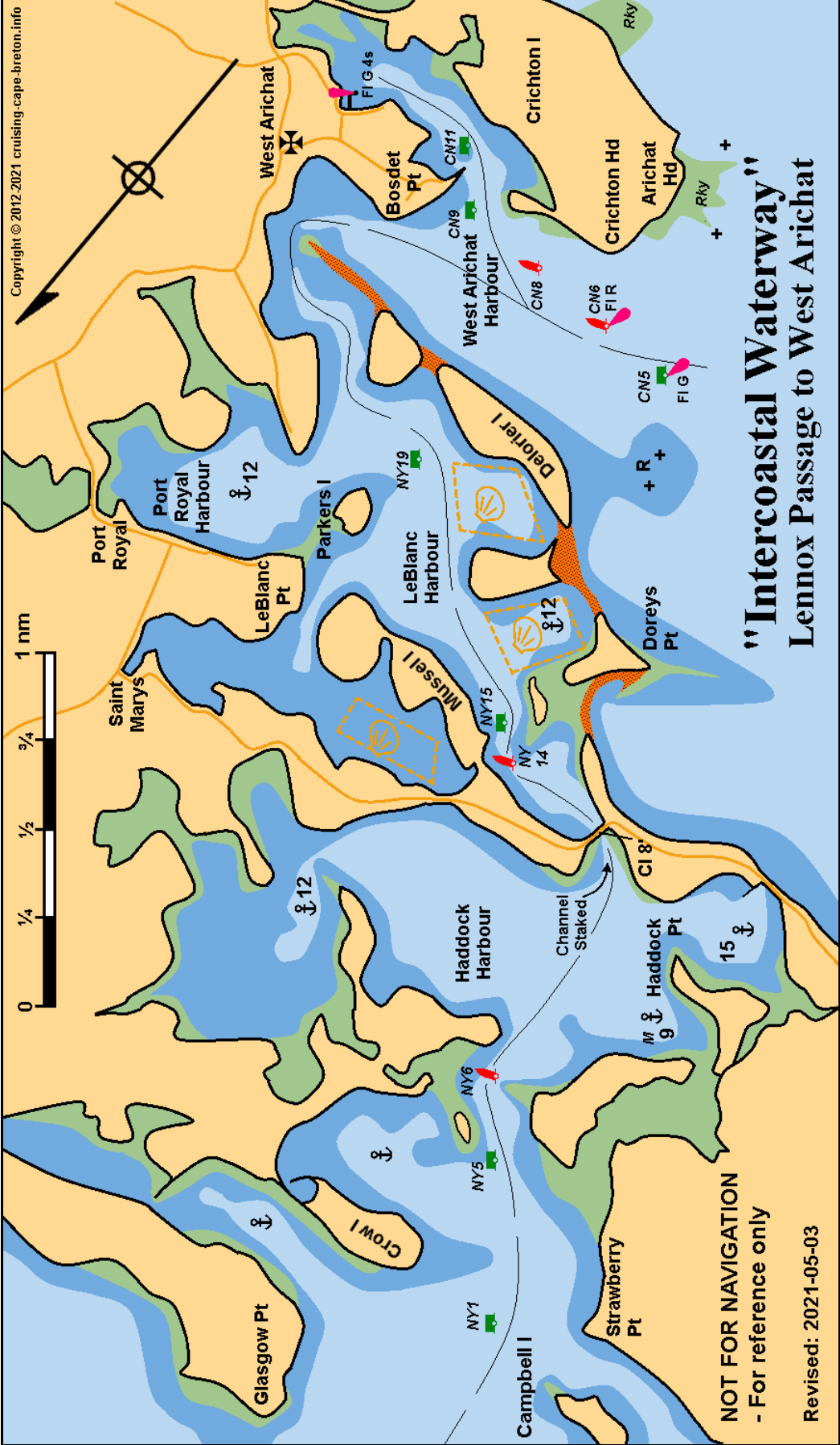
The entrance to **Le Blanc Harbour** from West Arichat is shallow and 'local knowledge' should be sought. The **Haddock Harbour** area has several well-protected anchorages, and is easy to enter from Lennox Passage. The entrance is buoyed, but one needs to keep a sharp lookout for shoals extending from the points of land.

If proceeding into **Le Blanc Harbour** via the bridge at Mouselliers Passage, the approach is narrow and marked by stakes. Those unfamiliar with the area are cautioned to survey the area by dinghy before attempting passage under the bridge.

Direction of Buoyage In the 'Intercoastal Waterway' is North to South.

Use tides for Cannes

Updated: 2021-03-16



"Intercoastal Waterway" Lennox Passage to West Arichat

NOT FOR NAVIGATION
- For reference only
Revised: 2021-05-03