

Grand Étang

CHS Chart No: 4463 – Chéticamp to Cape Mabou
4449 – Chéticamp, Grand Étang and Margaree Harbours

Amenities: dockage, power, diesel, Lamoyne Co-op (Grocery, ATM, propane) 902-224-3335, Credit Union, Post Office. Centre de la Mi-Carême - Art Gallery & Museum (ice cream)

Harbour Authority: Harbour Authority of Grand Étang
PO Box 162, Grand Étang, Inverness County NS B0E 1L0
Phone: 902-224-1349
Email: hagrandetang@outlook.com

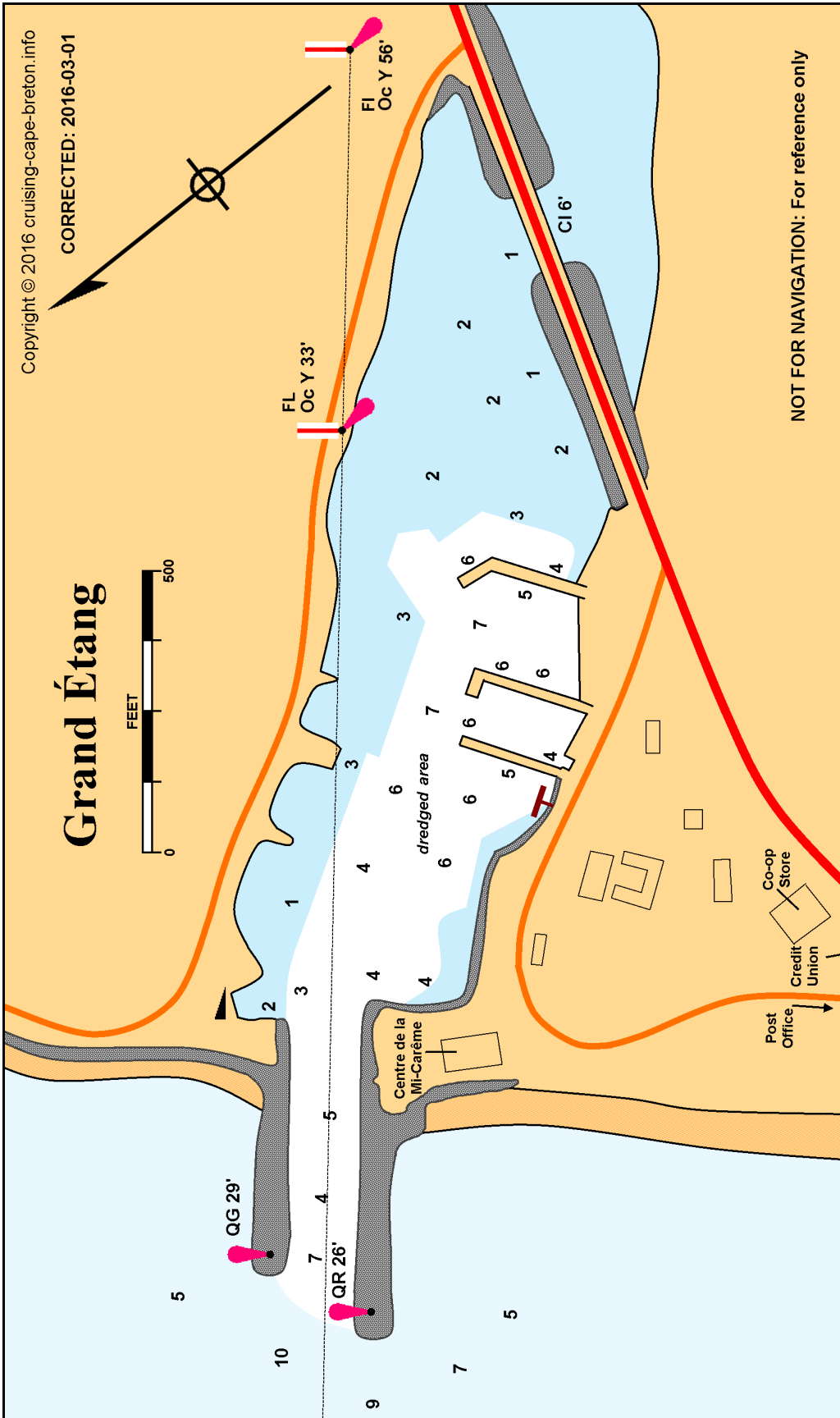
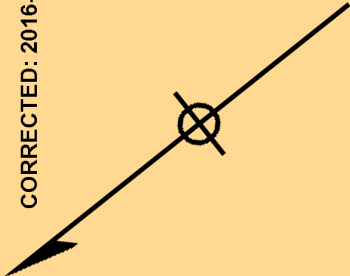
Description: For a small harbour, Grand Étang has quite a lot going for it. The Co-op store and Credit Union are within 200 yards and a post office is less than 400 yards away. The harbour is dredged, though subject to silting around the wharves and entrance. Soundings shown are from 2015. Local knowledge is advised before docking. Dredging between the breakwaters and in the harbour was on-going in 2016, as well as wharf refurbishment.

Navigation: An approach waypoint of 4633.5/6103.5 will place you close to the harbour range line at about 0.65 nm off the entrance. There is a least depth of 9 feet on the range leading into the harbour. Between the breakwaters the depth is greater on the starboard side.

NOTE: The range markers are also equipped with flashing white 'locator' lights.

Updated: 2016-09-23

Grand Étang



NOT FOR NAVIGATION: For reference only