

## Chedabucto Bay — Isle Madame, Lennox Passage & Strait of Canso

The area comprising the west coast of Isle Madame, Inhabitants Bay, and the Lennox Passage is a gunkholers' paradise, offering numerous secure anchorages, many of which are free of any sign of human habitation. **CHS Chart No. 4308** is all you need for navigating this area. **Petit-de-Grat**, "**The Intracoastal Waterway**", **Couteau Inlet**, **Bourgeois Inlet**, and **D'Escousse** are covered individually.

**Arichat**, the largest settlement on Isle Madame, has many amenities to offer the cruiser. Arichat Harbour may be entered from either side of Jerseyman Island. The south side is wide and well-buoyed. **Crid Passage** on the north side is narrow and lined with rocks on the north side of the passage, but depths are bold close to Beach Point, and the passage is much easier than might appear on the chart. The Isle Madame Boat Club, at Robins Point on the south side of the harbour has excellent facilities, though limited dock space. One can anchor off if need be or anchor at the head of the harbour south of Babin Point. Boat Club members are most hospitable and will offer to drive you over to the other side of the harbour for shopping, or restaurants, as may other local residents—or you can dinghy across. There is good anchorage on the east side of **Jerseyman Island**. Boat Club members maintain a couple of moorings close to the shore that cruisers are welcome to use, however, they are in relatively shallow water, and might be unsuitable for vessels with a draught much over 4 feet, depending on the tide. A 24-hour emergency medical clinic is available in Arichat.

**West Arichat** has a snug harbour with a well-buoyed entrance. The more adventurous, and those with shallow draught may wish to venture into **Le Blanc Harbour**, and **Port Royale Harbour**, and those with an air-draught of less than 8 feet can proceed into **Haddock Harbour** and on into the **Lennox Passage** by the '**Intracoastal Waterway**'—a saving of considerable distance (5+ NM) and in complete protection. [See "**Intracoastal Waterway**"—**Lennox Passage to West Arichat** chart for details.]

**Janvrin Harbour** is another well-protected anchorage. The public wharf, refurbished in 2012, is for shallow draught vessels only, but one can anchor in 9 feet close to the wharf.

On the north side of the western entrance to the Lennox Passage, Inhabitants Bay and the associated basins provide several anchorages, with the basins being preferred for small vessels. **The Big Basin** (Inhabitants Harbour)<sup>1</sup> is large and provides several options for anchoring. **The Little Basin** (The Basin) provides better all-round protection, with the cove on the east side of **MacNamaras Island** (Evans Island) being a delightful anchorage, and if a strong easterly threatens one can easily find a protected anchorage less than a mile across the basin.

Proceeding eastward into the **Lennox Passage**, **Haddock Harbour**, on the south side, has several well protected and secluded anchorages. Once past the **Lennox Passage Bridge**, **Seal Cove**, on the north side has a shallow, unbuoyed, narrow entrance, suitable for shallow draft vessels. **Poulamon Bay** offers several opportunities for anchoring, but is open to northerly winds. **Couteau Inlet** on the north side offers better protection.

**CAUTION: To avoid being stuck in the open position, the Lennox Passage Bridge may not operate when the temperature exceeds 25C (77F). Call on VHF-16 or 902-345-2681 for status.**

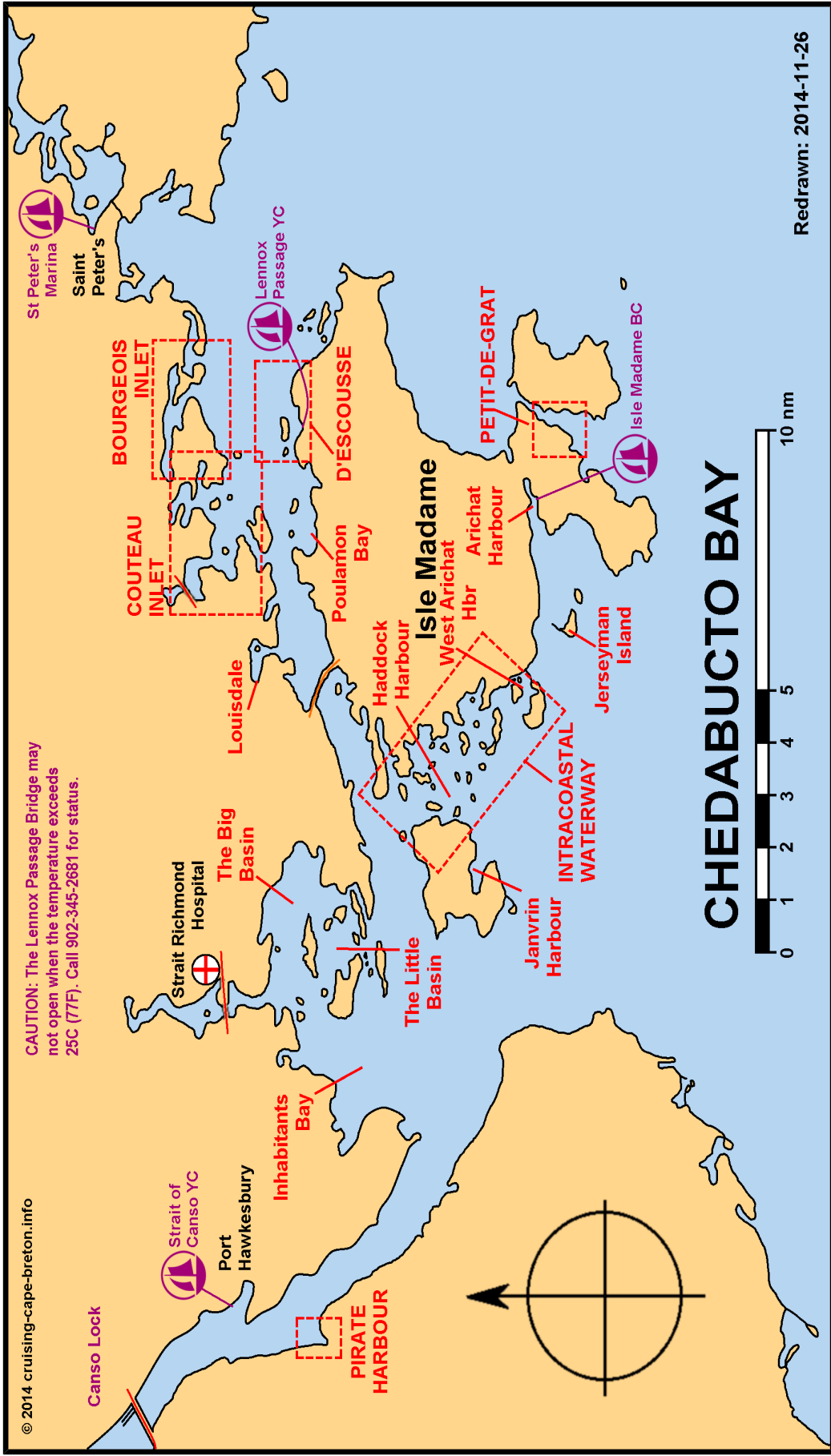
### Direction of Buoyage:

- In the Lennox Passage is East to West
- In the 'Intracoastal Waterway' is North to South

Updated: 2014-07-05

---

<sup>1</sup> The latest edition of Chart 4308 gives revised names for some of the islands. The newer names are given here followed by the previous name in parentheses, for the benefit of those still using the older chart editions.



© 2014 cruising-cape-breton.info

Redrawn: 2014-11-26